

Supply Chain Agro Logistics Ecosystem (SCALE)



Background



FOOD WASTE IS A GLOBAL CHALLENGE

1.3 BILLION TONS

of edible food – equivalent to a third of global production of food wasted annually by the world. According to a report by the Food and Agriculture Organization of the United Nations, which is enough to feed 3 billion people, and the value of this wasted amount of food is about 680 billion dollars.

Agriculture value chain stakeholders such as farmers, distributors, sales outlets and food processing companies are facing a significant challenge due to lack of digitalized supply chain management with accurate, comprehensive-time timely insights of post-harvest, causing ;

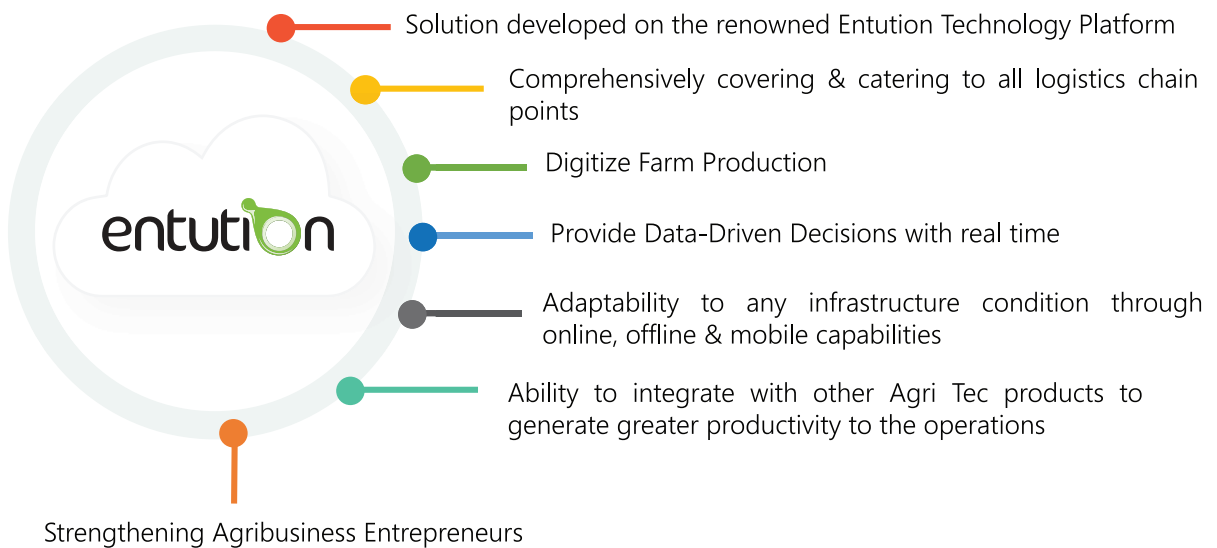


SCALE

(Supply Chain Agro Logistics Ecosystem)

Entution SCALE can ease agricultural supply chain management by automating entire operational processes seamlessly, connecting Farmers, Field officers, distribution, and decision support systems.

The system is built on the Entution platform leveraging the innovative architecture and state of the art technology. Embedded with features such as procurement management, Inventory & Warehouse Management, Asset Management, Fleet management, workflow approval & task management and BI decision support system for authorities to take necessary decisions in advance and secure a sustainable and efficient supply chain.



Reduce Excess Supplies



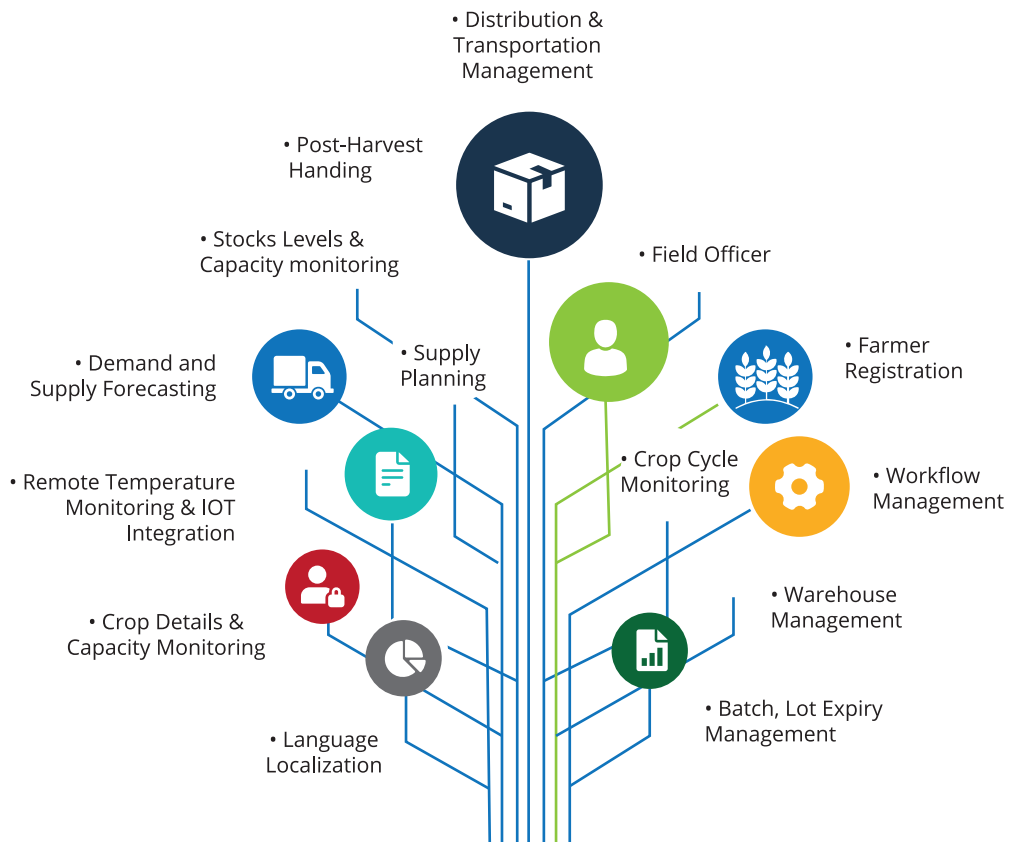
Avoid Stock Outages



Minimize Price Fluctuations

Strengthening Agricultural Supply Chain

Entution SCALE is a fully-fledged digitized agricultural logistics management information system built on a unique architecture using state of the art technologies. The system will cover all the aspects of the agricultural value chain management, including crop management, field visits and scheduling crop cycles, logistics management and decision support system.



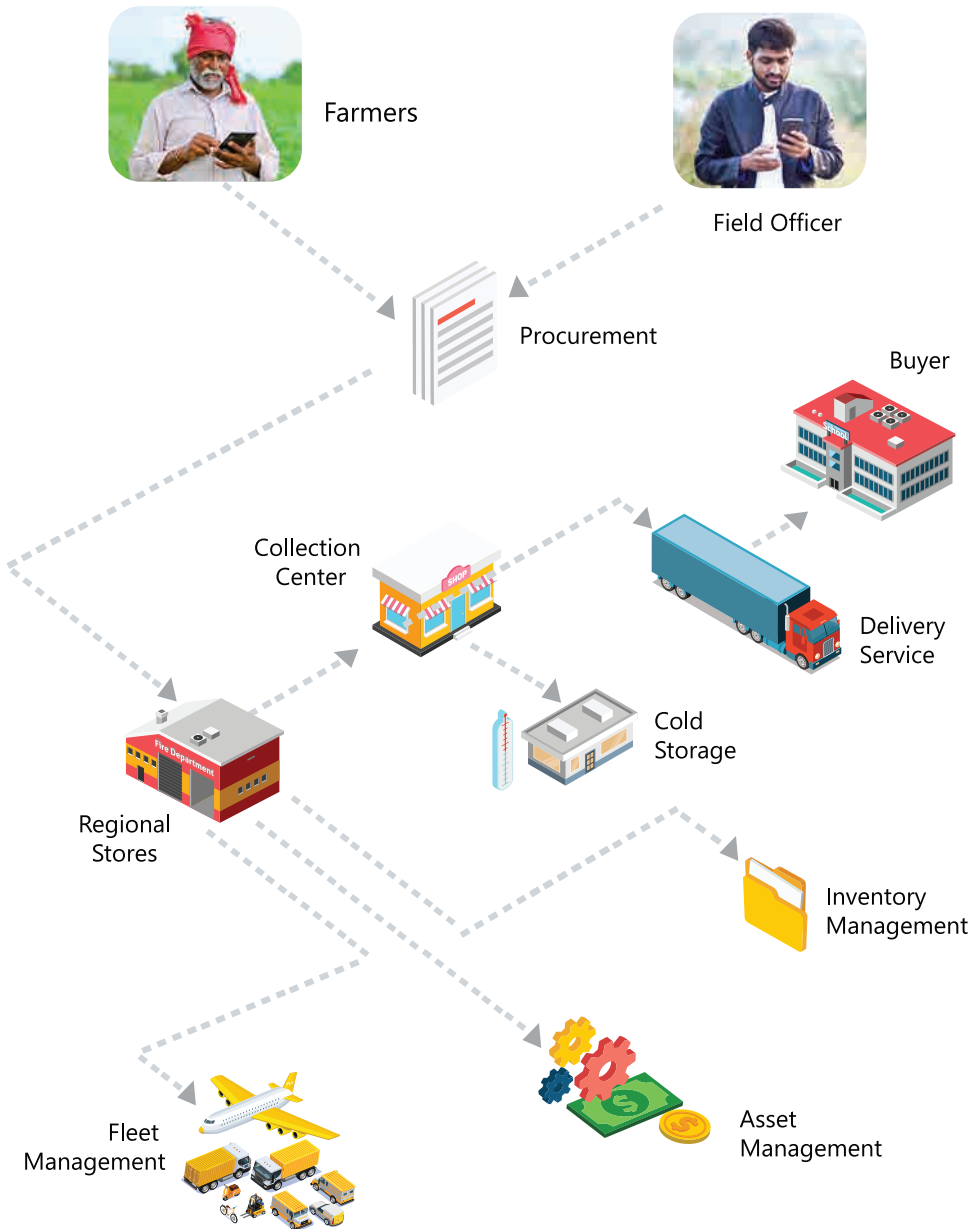
- User roll based Access Control
- Scheduling field Visits & Route Planning
- Generate & Export Reports
- Farming Program Management

- Procurement Management System
- Pickup & Delivery Planning
- Approvals & Task Management
- Fleet Management

- Operational Strategic & Analytics Dashboards With BI
- System Notification & SMS/ Email Alerts
- Data warehousing & upload
- System data Inter - Operable layer

- Quality Check & Grading
- Inventory Management
- Support Agri Tec Product Integration
- Asset Management System

Strengthening Supply Chain Ecosystem



Farmer Empowerment

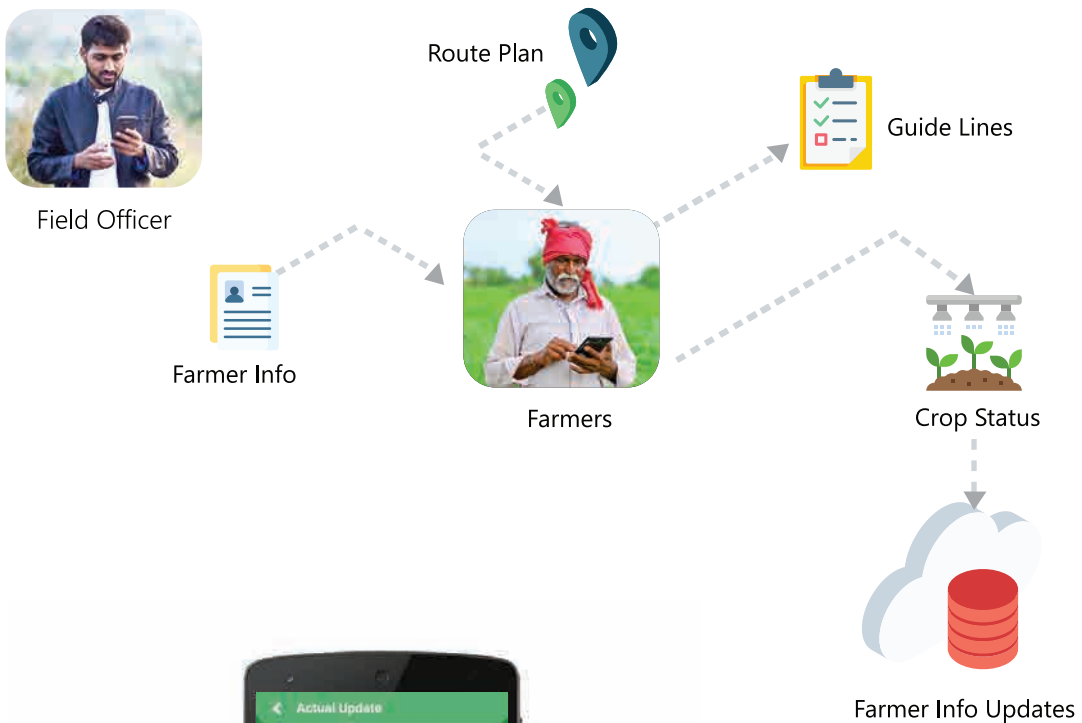
Facilitating to manage national level farming programs to meet food demand and supply on agricultural products.

- ✓ Facilitates farmers to register their farming crop detail and capacities
- ✓ Analytics on food demand & support to right product to harvest in right quantities
- ✓ Connection with field officer and support to best product to harvest
- ✓ Provides analytics on post harvesting information and pricing pattern



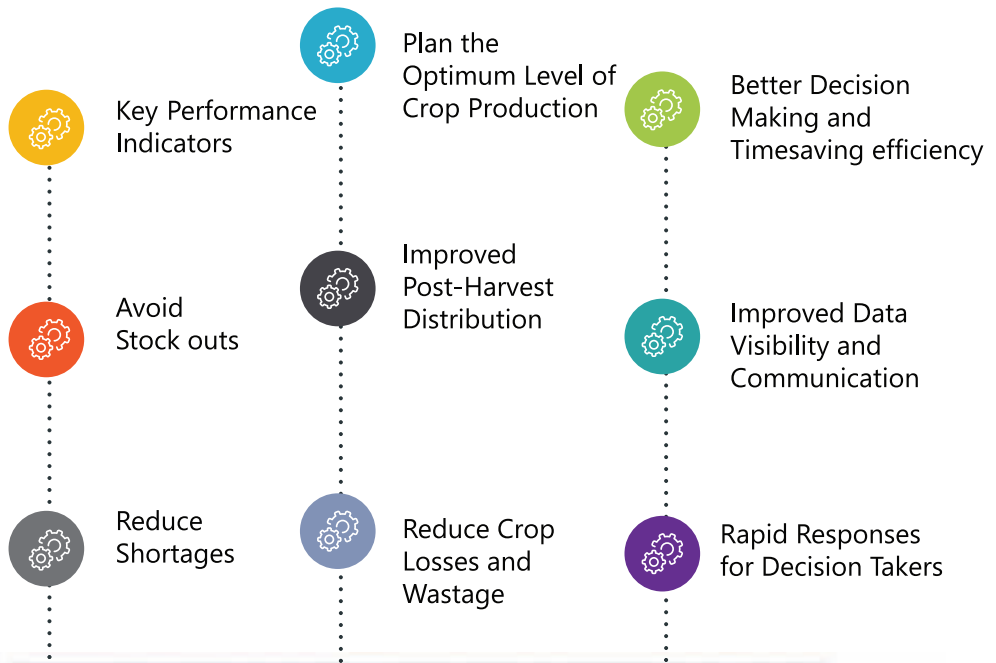
Field Officer Enablement

- ✓ Scheduling field officer visits and update crop status
- ✓ Update field officer visits and update farming cycle
- ✓ Provides historical farming records and demand pattern
- ✓ Route planning and event calendar



Decision Support System

Entution SCALE comprehensively delivers decision driven analytical information by comparing the farmer's farming cycle and the buyer's periodical demand, which synchronizes demand and supply of the harvest without shortage or waste of production.



Logistics Management

Entution SCALE fully supports the six logistics rights that can streamline crop production distribution by automating the entire value chain management process, from analyzing the optimum quantities required for the targeted market.

The system supports procuring and distributing crop production across many supply chain points with remote temperature monitoring devices. The solution further strengthens the supply chain by providing warehouse management, inventory management, asset management, and fleet management to ensure the best utilization of crop production.



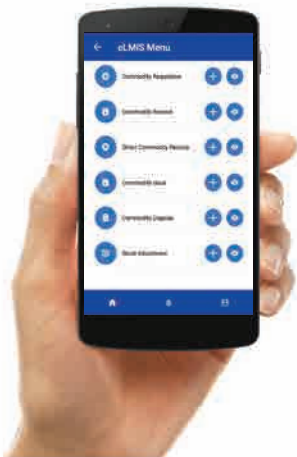
SCALE Core Applications

Entution SCALE is a fully-fledged solution that caters to all the relevant supply chain points covering, Central, Regional and Remote Supply Chain points. The cloud-based online application is deployed at the sites with proper infrastructure and internet connectivity. The solution stack also includes offline desktop Apps to cater areas with poor infrastructure and internet connectivity to ensure uninterrupted operations. The state of art Mobile Application is designed purely for farming operations, ensuring mobility, accessibility and availability.



Online

- ✓ Cloud Based Solution with extensive functionalities
- ✓ Real time data synchronizations and validations.
- ✓ Best suit for the sites / locations with proper infrastructure and internet connectivity.
- ✓ Mainly supports central and regional level supply chain operations.

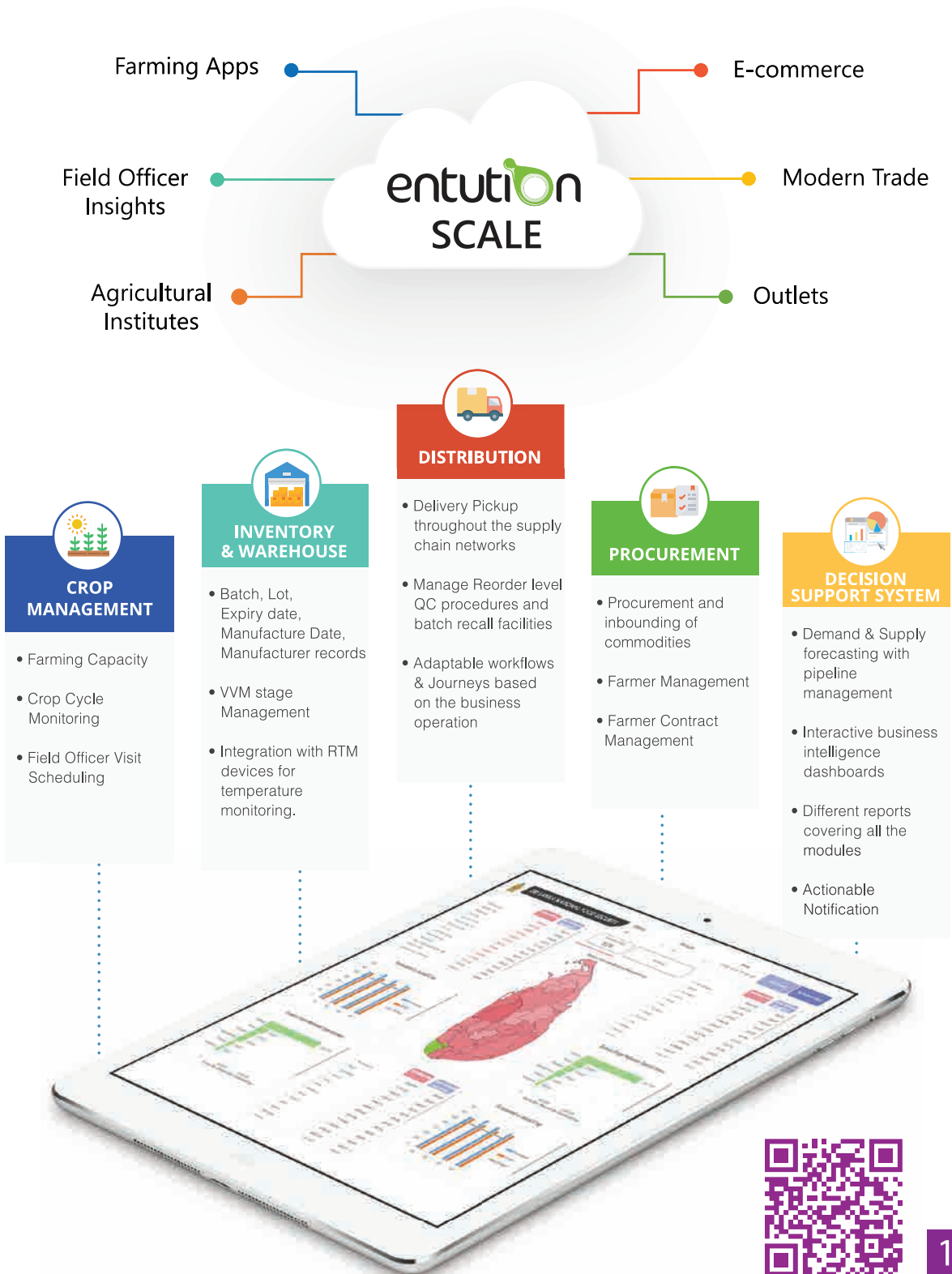


Mobile

Mobile application is a subset of the offline application. This can be used at the Health Centre / Health Posts level. Application can work with interrupted internet connectivity and synchronize data based on the internet availability.

Interoperability

Seed to Plate



Solution Recognitions


Entution SCALE has been developed on top of Bileeta's State of the art Entution Technology Platform, seamlessly integrating with the Entution Vesta eLMIS (Electronic Logistics Management Information System) supports Agro Logistics Supply Chain operations seamlessly embedding with core features such as Procurement Management , Inventory & Warehouse Management , Asset Management , Task Management , Fleet Management , Workflows and Business Intelligence Capabilities.

Our eLMIS Entution Vesta is a fully-fledged eLMIS built on a unique architecture and has been recognized as the only fully compliant eLMIS solution on the latest research conducted by The Global Fund & Gavi. We have implemented our solution in countries such as Nepal with the support of USAID & GHSC-PSM and Zimbabwe with the help of TGF & UNDP. Further, we were adjudged by "Accenture" as one of the leading DSS providers in the Health Supply Chain Industry. The key reason for our successful track record is the experience of our team in conceptualizing and developing state of the art solutions that are easy to adopt, use, and sustain.

"Qualified software solutions for Logistic Management Information System" by the Global Fund and Gavi, The Vaccine Alliance Report-2019.

Only Fully Compliant eLMIS

Software Solution	Requisition/ Allocation	Inventory Control	Performance Dashboard	Mobile App Option	Software as a Service	Business Intelligence	Cloud Hosting Only	Warehouse Management	Asset Management
Open LMIS	✓	✓	✗	✓	✓	✗	✗	✗	✗
Field Supply	✓	✓	✗	✗	✓	✗	✓	✓	✓
mSupply	✓	✓	✓	✗	✓	✗	✗	✓	✓
Entution Vesta	✓	✓	✓	✓	✓	✓	✓	✓	✓
e-LMIS Medexis	✓	✓	✗	✗	✗	✓	✓	✓	✓
Logistimo	✓	✓	✗	✓	✓	✓	✓	✓	✗
Vitalliance LMIS	✓	✓	✓	✓	✓	✓	✓	✓	✗



Scan QR code




Table 1 : Comparative Attributes of the Qualified LMIS Solutions

Reviewed by
a Technical Evaluation Committee (TEC) comprising experts from



Bileeta's Achievements in Health and Well Being Sphere



Entution Vesta Electronic Logistics Management Solution Special Recognitions

Report: Opportunities to Transform Public Health Supply Chains in Developing Countries using Decision Support Systems Prepared by USAID, PATH and Bill & Melinda Gates Foundation.

It's an honour to have Digital Square, a PATH-led initiative by the USAID, and Accenture, to bring Bileeta Entution VESTA solution into the limelight in their Research Report as an investment-ready promising application of DSS in Public Health Supply Chains in the developing countries.

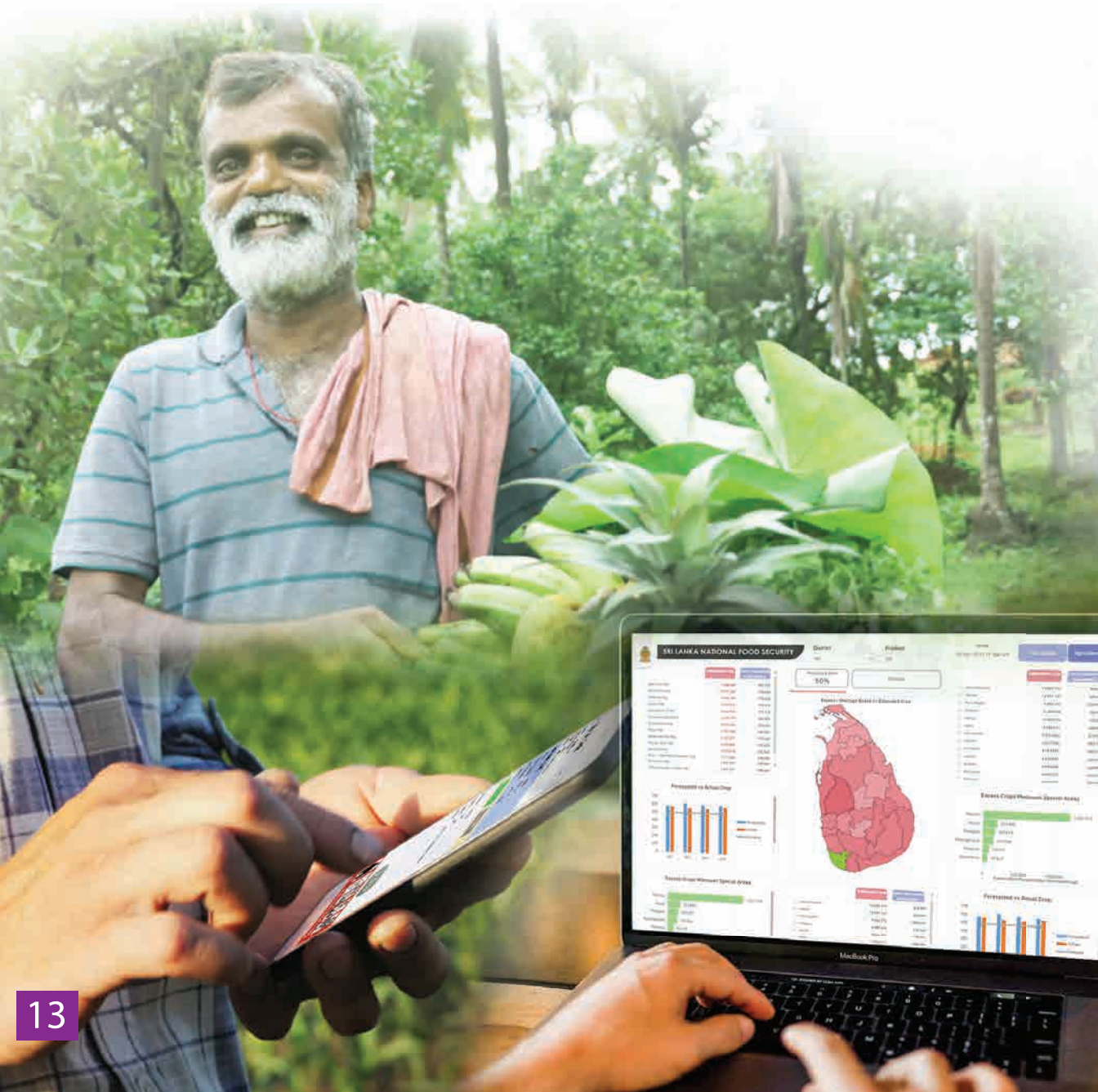


Scan QR code



Ready to Deploy

Entution SCALE is ready to engage in both developed & developing countries with minimal configuration, structured training sessions, video and user manuals. The unique architecture of the Entution platform allows accommodating complex user requirements and localization, improving user acceptance of the solution. Based on our proven fully automated, semi-automated and manual implementation model. Bileeta is capable of carrying out the implementation and ensure the long-term sustainability of the solution via local capacity building.





One of the critical reasons for the successful track record is the experience of Bileeta's team in conceptualizing and deploying state of the art solutions that are easy to adopt, use and sustain. The subject matter experts are highly experienced and proficient in the supply chain management industry and deploying software solutions in various geographies. The technology team is a power-packed unit of masters in specific areas of technological expertise. They are bound to the ever-changing trends in information systems solutions and create cutting-edge solutions that harness the power of tomorrow's technology for today.



bileeta

Bileeta (Pvt) Ltd.
160/24, 1st Floor,
Kirimandala Mawatha,
Colombo 5, Sri Lanka.

 +94 114 378 378

 vcminfo@bileeta.com

 www.bileeta.com

