

bileeta

entution **ERP**

Product Capability Guide for SMEs

*Driving the SMEs towards
New Data Driven Culture*



www.bileeta.com



Are you Struggling with Erratic and Inaccurate Information,
which causes Roadblocks to your **GROWTH??**



Entution ERP is a comprehensive Enterprise Resource Planning solution that focuses on empowering start-ups, small & medium sector businesses through their digital transformation journey. Entution ERP Solution focuses on streamlining the business processes, achieving operational excellence, & delivering intelligent information to its potential clients to leverage through technology. The solution comes with series of business modules such as Financial Management, Sales & Invoicing, CRM, Procurement, Inventory Management, Simple Jobs & Projects, Services, Simple Manufacturing & Fixed assets with an array of informative BI dashboards with over 100+ KPIs. It digitally transforms businesses, which are involved in Sales & Distribution, Warehousing, Manufacturing, projects, & services & manage their financials to gain competitive advantage & make their businesses efficient & profitable. Entution is a Next-generation Intelligent ERP that is more than just a software. It combines industry best practices, a flexible platform, an adaptive user experience (UX), & embedded intelligence capabilities for informed decision making.



How Entution ERP Help SMEs to Embrace Greater Growth Potential



Entution SME ERP seamlessly helps you to better plan your resources, reduce operational costs, eliminate wastages, improved inventory costs and increase process excellence.



Small and Businesses can eliminate roadblocks to their growth by embracing globally accepted business processing practices introduced by Entution ERP.



Entution ERP offers better customer service by providing better access to customer information that prevents revenue leakages.



Better Financial operations lead to well-disciplined financial management practices with adequate controls.



Improved cash flows of the business operations.



It supports improving communication across departments and optimizing business processes, enabling easy visibility of all operations.



Outdated legacy systems generate inaccurate information and unnecessary data islands where small and medium businesses find making well-informed decisions challenging. Entution ERP is a powerful data hub that allows businesses to collect, store, and analyze data seamlessly across all operations.



Entution ERP supports small and medium businesses to adapt to new 'Data Driven' operations with enhanced business reporting and real-time information.



Entution ERP makes you intelligent in making informed decisions by providing access to state-of-the-art smart KPIs and Business Intelligent reporting facilities.

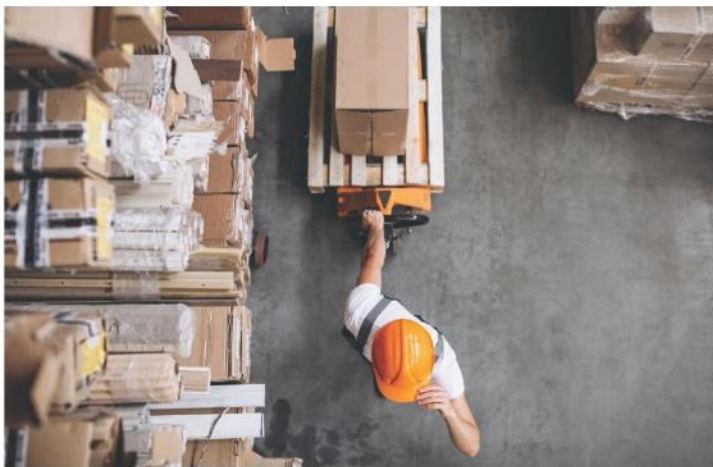
Bileeta Entution at a Glance

Core Modules



Procurement

The Entution Procurement module covers end-to-end aspects of any procurement operation, whether Imports or local procurement channels. You will be able to manage your suppliers, keep track of supplier credit control, record Purchase Orders, Invoices & payments to suppliers, and keep track of the returns process.



Inventory Management

The Entution Inventory management module will assist by planning your inventory to ensure over-purchase is avoided and required procurements are tracked on time. This module will also provide real-time visibility to all the inventory at every location & warehouse & transparency in inventory movement, inventory costing & expiry management.





Sales & Distribution

Entution Sales Module empowers your sales team to initiate a Sale Order & progress until delivery & invoice completion, simultaneously managing credit control functionalities, pricing variants, discounting scenarios & order fulfilment. These processes bring absolute visibility & control to your entire sales operation, empowering you to implement market strategies dynamically.



Accounting & Finance

Entution integrates all processes in your company into the centralized Accounting & Finance Module, which is the core of those business processes. Simultaneously Entution will also manage financial elements such as your general ledger, accounts payable, accounts receivable, cash & tax management, ultimately generating the automated Financial Statements. You will have real-time access to important core business & financial data for strategic decision-making and regulatory compliance adherence.





Business Analytics & Information

Entution enables your management team to easily monitor the overall organizational performance through its comprehensive, real-time Business Analytics & Information platform. That analyses strategic & operational business data & provides a customized representation of critical information that reflects your organization's current status and forecasted insight through intelligence information, which will enhance the decision-making process.



Add On Modules

Fixed Asset Management



Entution Fixed Assets module handles asset registration, classification, tagging, retirement and disposal for individual as well as composite assets.



Customer Relationship Management



You can follow up on your customers from a central position, engaging in effective communication with customers while you keep track of every interaction with your customers.



Ecommerce Platforms

Bileeta Entution SME ERP can be seamlessly integrated with Ecommerce Platforms Such as Shopify , CORD360 and many more.

Simple Manufacturing



Production planning, such as raw materials (MRP), machinery & labour, & track the status of work-in-progress, while obtaining a real-time picture of the shop floor.



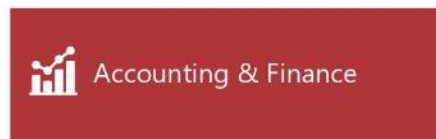
Project Management & Service Management

Our solution provides dedicated tools to help you define projects & service jobs, synchronize dates, track status, avoid missed deadlines, and ensure profitability over your job activities.

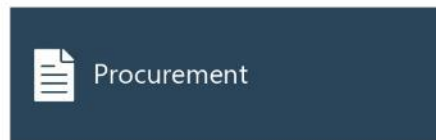
Bileeta Entution Core Modules & Core Capabilities



Order Placement & Invoicing Sales Quotations Simple Sales Invoicing Process
Partial & Under Deliveries. Credit Policies & Credit Control Returns Management



Cash & Bank Management Multi-Currency Operations Financial Statements
Account Payable Account Receivable General Ledger



Local Purchasing Import Management Import Costing Vendor Management
Supplier Payment Management



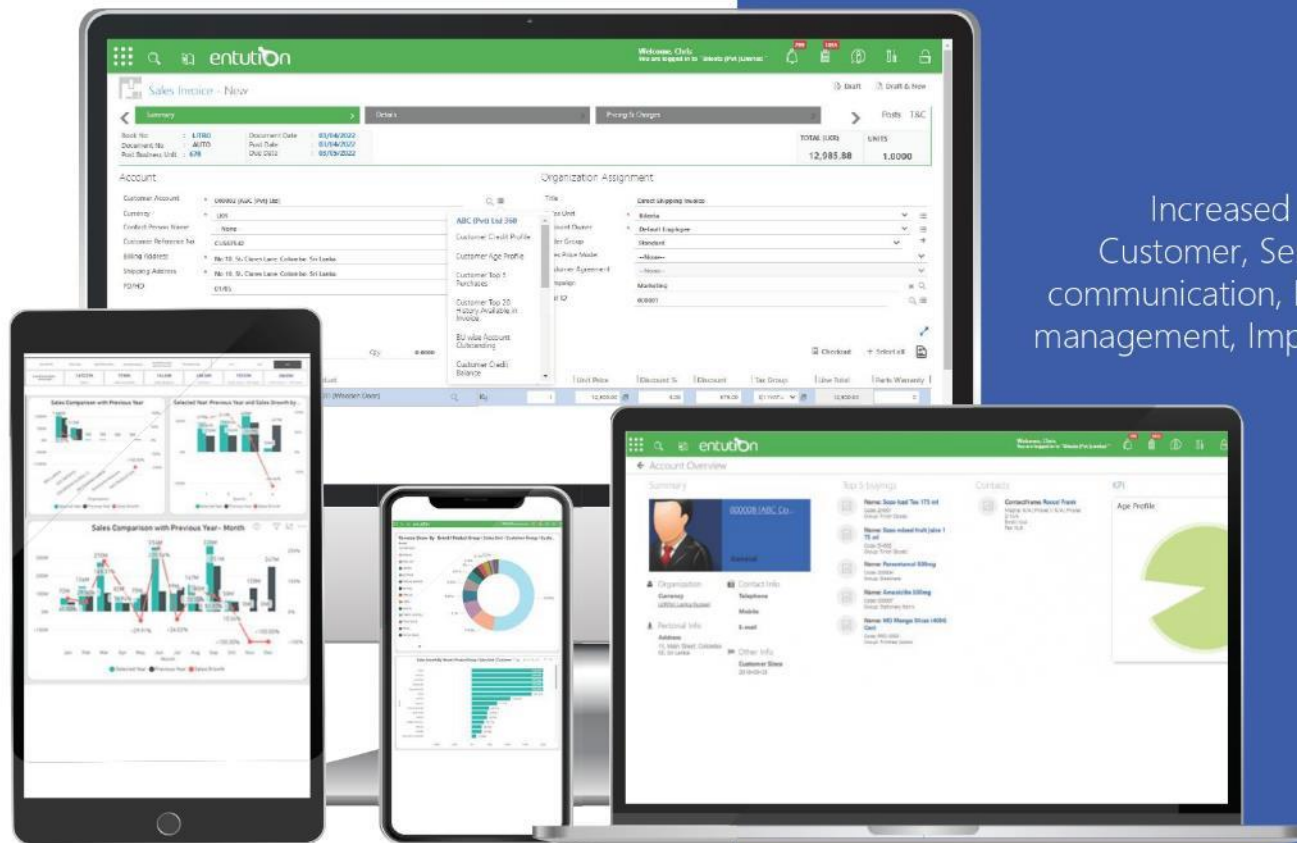
Multiple Warehouse Management Inventory Costing Inventory Movement Tracking
Expiry, Batch & Serial Tracking Inventory Transfers Stock Counts & Adjustments



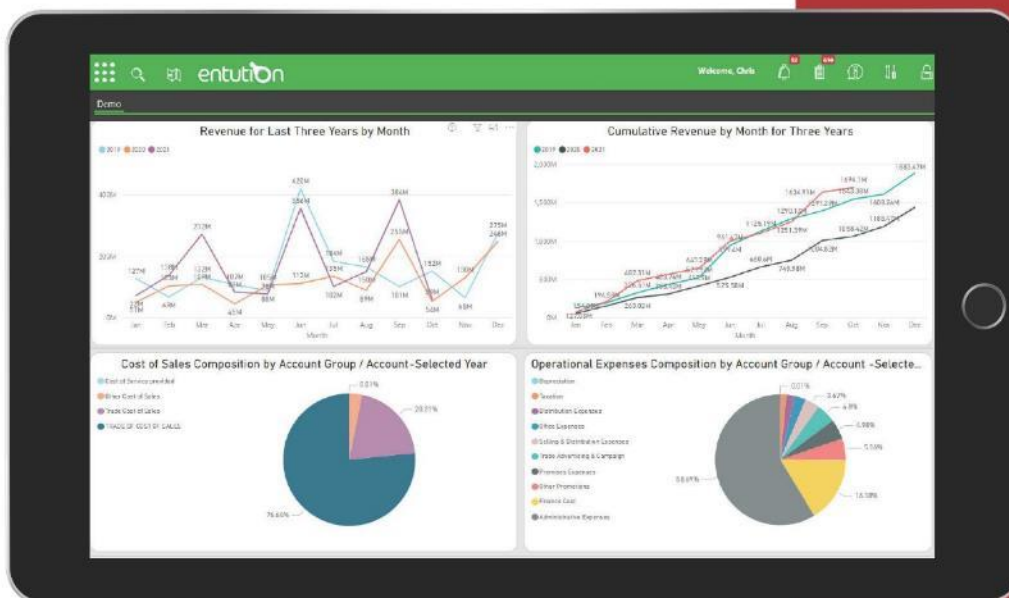
Quick And Accurate Data Compare Historical Data Recognizing Market Patterns
Overall Business Visibility Critical Data Availability For Strategic Decisions

Better Customer Experience with Entution Sales & Distribution

Increased Revenue Improved Customer, Service Better internal communication, Effective sales force management, Improved Productivity.



Better Financial Management to leverage of Profitability and Growth



Automatic document production,
fast and accurate invoices,
credit notes, purchase orders,
printing statements,
Improved Accuracy
Cost Minimization.

Better Procurement for Operational Excellence

Manage your procurement process
from raising Purchase Orders to
supplier invoices & return processing,
manage your suppliers and settle them
on time to gain better control
and efficiency.

A smartphone is shown on the left side of the slide, displaying a procurement software interface. The screen shows a green header bar with icons for 'Print' and 'Actions'. Below this, there's a section for 'Attachments' with a 'Print' button. The main content area displays a table with columns for 'Status', 'PO No.', and 'Invoice No.'. The first row shows 'Status' as 'PO', 'PO No.' as '1000', and 'Invoice No.' as '1000'. Below the table, there's a 'General Entry' section with fields for 'Date' (10/04/19), 'Time' (10:00), and 'Created Date' (10/04/19).

Manage your procurement process from raising Purchase Orders to supplier invoices & return processing, manage your suppliers and settle them on time to gain better control and efficiency.

Better Inventory Management with Visibility, Control & Traceability



Real-Time Business Intelligence Platform to Analyze the Overall Business

Capture end-to-end analytics for all business processes, and make strategic decisions based on accurate & timely insights to your operations.



Way Forward

📍 Bileeta (Pvt) Ltd.
160/24, 1st Floor,
Kirimandala Mawatha,
Colombo 5, Sri Lanka.

☎ +94 114 378 378

✉ sales@bileeta.com

🌐 www.bileeta.com

