

Entution SCALE



(Food Supply Chain Management System)

Digitizing Modern Trade Food Supply Chain
for Sustainable Food Future



Background

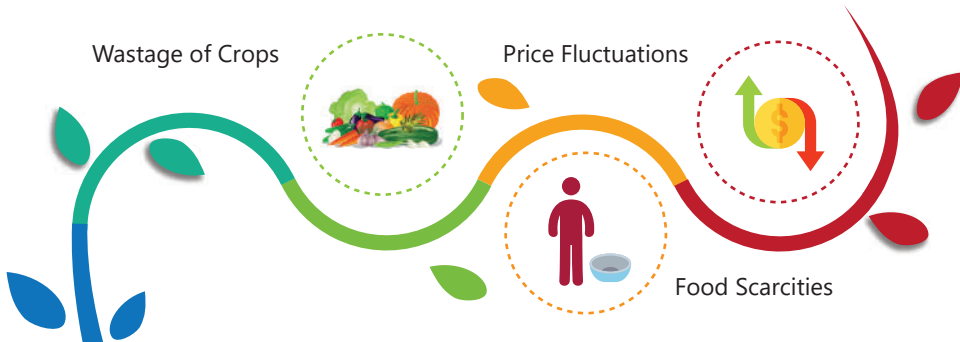


FOOD WASTE IS A GLOBAL CHALLENGE

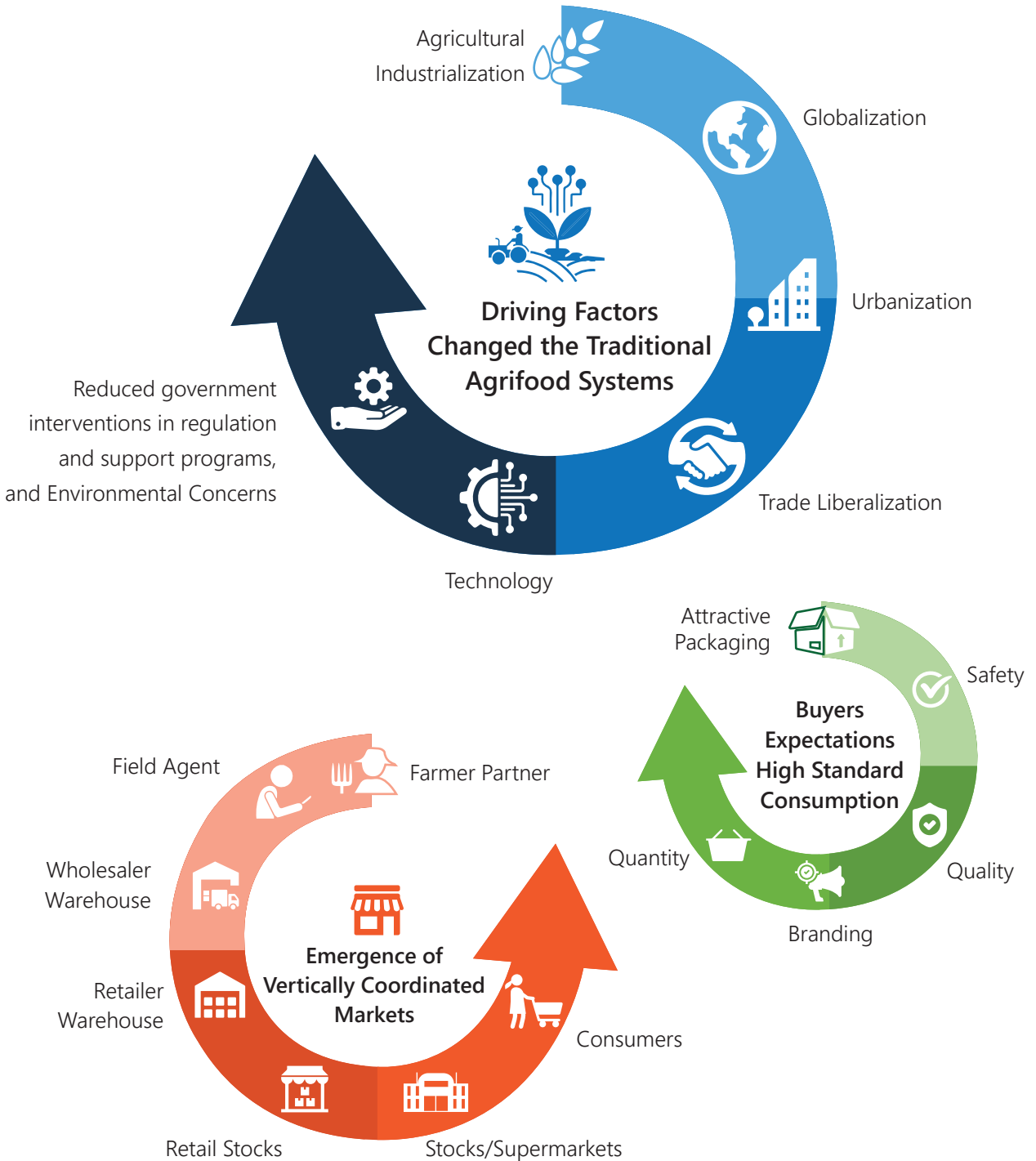
1.3 BILLION TONS

of edible food – equivalent to a third of global production of food wasted annually by the world. According to a report by the Food and Agriculture Organization of the United Nations, which is enough to feed 3 billion people, and the value of this wasted amount of food is about 680 billion dollars.

Modern trade value chain stakeholders such as farmer partners, distributors, sales outlets and food processing companies are facing a significant challenge due to lack of digitalized supply chain management with accurate, comprehensive-time timely insights of post-harvest, causing ;



Phenomenal Reasons for the Emergence of Modern Trade



Modern Trade

(Supermarkets/Hypermarkets)

in search of Digitized Supply Chain Systems to Empower Operational Excellence

Effectively support Contract Farming through better Partner Farmer Management



To streamline coordinated food supply chain ecosystems connecting with smallholder farmer groups



Supports to Manage Partner Farmer compensation plans (Revenue and profits)



Ensuring sustainable food supply in optimum levels



Assure Operational Excellence :

- Eliminating wastages due to food oversupply
- Eliminating food shortages with sustainable supply

To grow smallholder farmer ecosystems via :

- Management of contractual agreements
- Information sharing



Digitized Supply Chain Systems empower Super Market/Hyper Market Chains

Entution SCALE



(Food Supply Chain Management System)

Entution SCALE can ease modern trade supply chain management by automating entire operational processes seamlessly, connecting Farmer Partners, Field Agents, Distribution, and Decision Support Systems.

The solution is highly flexible as it can be easily mapped with the operations of a small agribusiness aggregator to a medium scale mini-market chain/supermarket chain managing a few sets of smallholder farmer groups to a larger supermarket chain/hypermarket chain with a substantial number of partner farmer ecosystems.

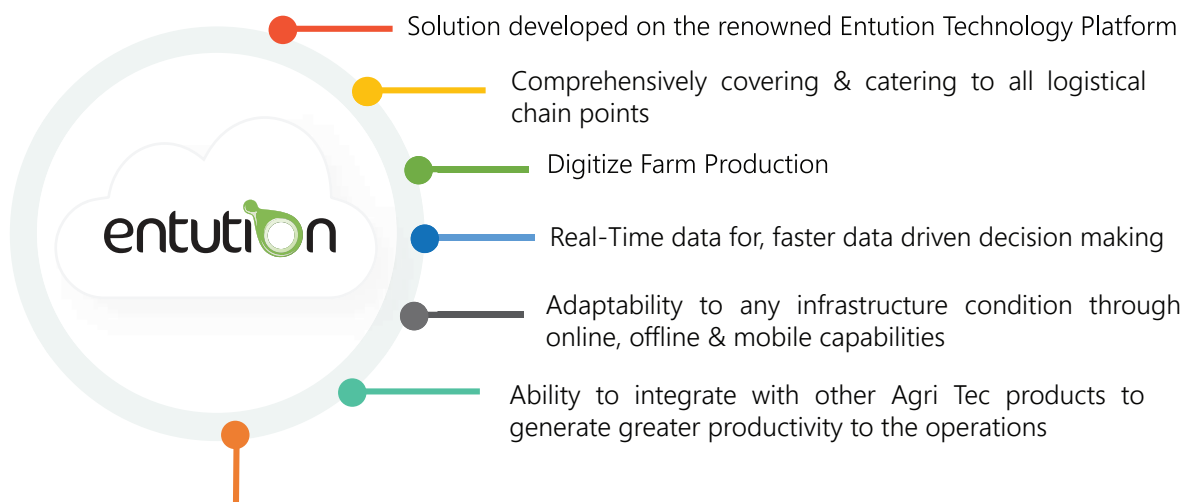


Entution SCALE



Core Features & Functionalities

The system is built on the Entution platform leveraging the innovative architecture and state of the art technology. Embedded with features such as procurement management, Inventory & Warehouse Management, Asset Management, Fleet management, workflow approval & task management and BI decision support system for authorities to take necessary decisions in advance and secure a sustainable and efficient supply chain.



Strengthening Agribusiness Entrepreneurs



Reduce Excess Supplies



Avoid Stock Outages



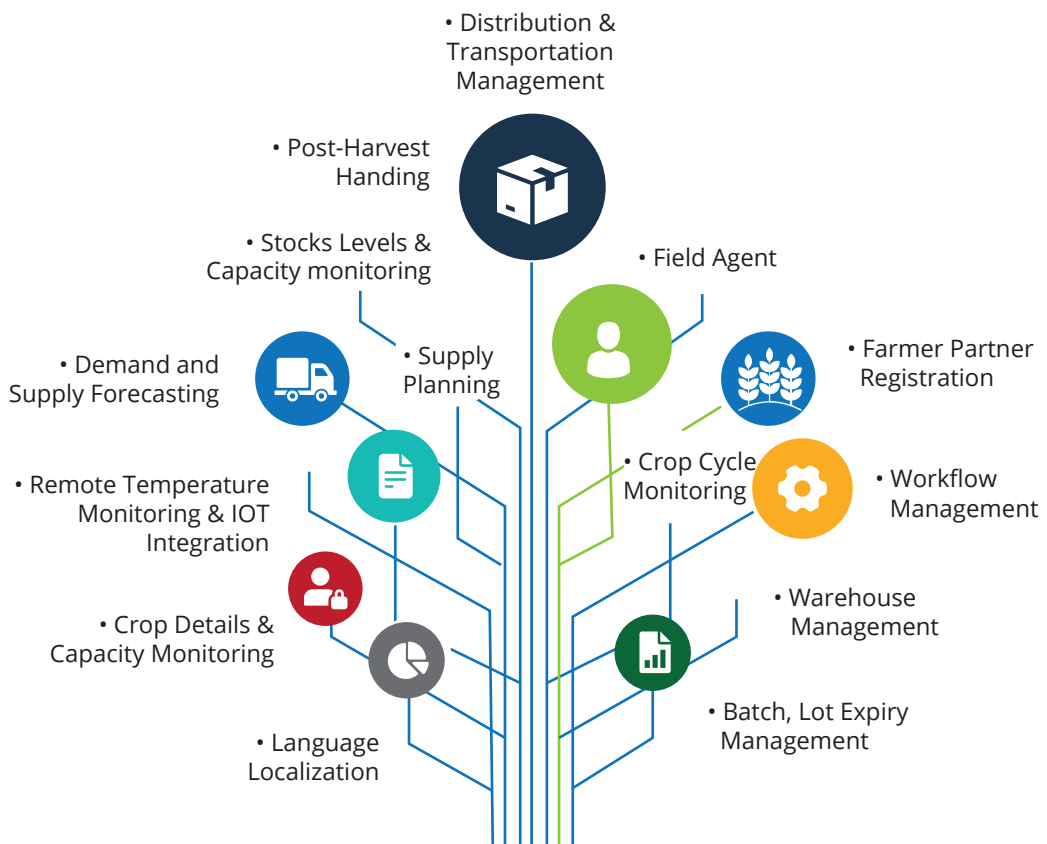
Minimize Price Fluctuations



Yield Forecasting

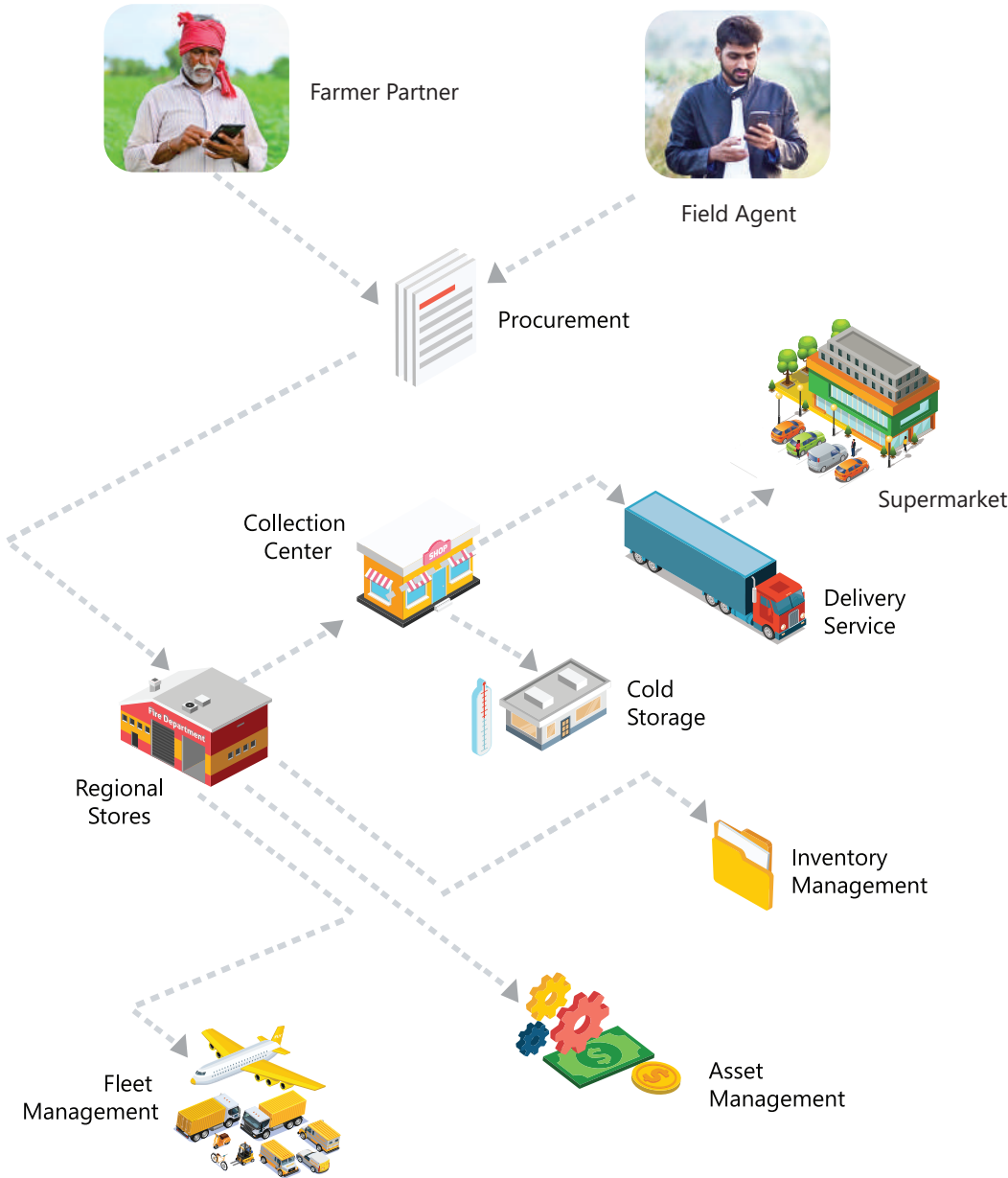
Strengthening Modern Trade Supply Chain

Entution SCALE is a fully-fledged digitized modern trade/supermarkets food logistics management information system built on a unique architecture using state of the art technologies. The system will cover all the aspects of the modern trade value chain management, including crop management, field visits and scheduling crop cycles, logistics management and decision support system.



- | | | | |
|---|--|---|---|
| <ul style="list-style-type: none"> • User roll based Access Control • Scheduling Field Visits & Route Planning • Generate & Export Reports • Farming Program Management | <ul style="list-style-type: none"> • Procurement Management System • Pickup & Delivery Planning • Approvals & Task Management • Fleet Management | <ul style="list-style-type: none"> • Operational Strategic & Analytics Dashboards with BI • System Notification & SMS/Email Alerts • Data Warehousing & Upload • System Data Inter - Operable Layer | <ul style="list-style-type: none"> • Quality Check & Grading • Inventory Management System • Support Agri Tec Product Integration • Asset Management System |
|---|--|---|---|

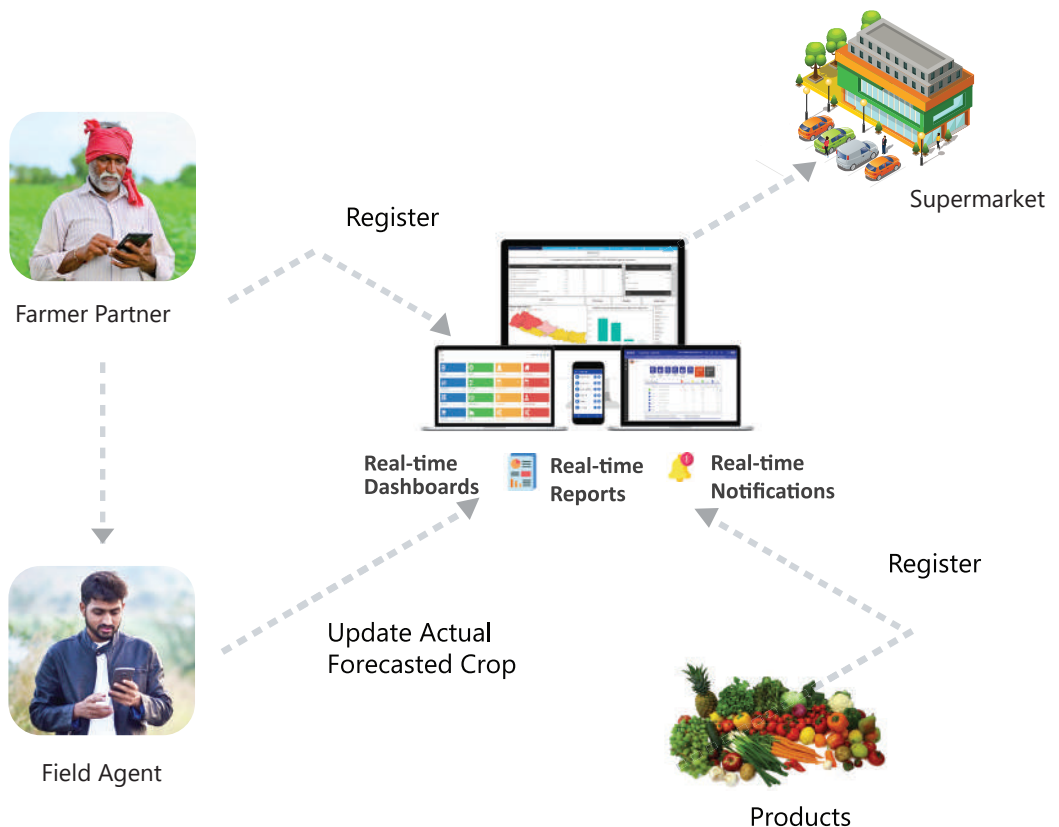
Strengthening Supermarket Supply Chain



Farmer Partner Empowerment

Facilitating to manage national level farming programs to meet food demand and supply on agricultural products.

- ✓ Facilitates farmer partners to register their farming crop detail and capacities
- ✓ Analytics on food demand & support to right product to harvest in right quantities
- ✓ Connecting with field agent and support to best product to harvest
- ✓ Provides analytics on post harvesting information and pricing pattern



Field Agent Empowerment

- ✓ Scheduling field agent visits and update crop status
- ✓ Update field agent visits and update farming cycle
- ✓ Provides historical farming records and demand pattern
- ✓ Route planning and event calendar



Logistics Management

Entution SCALE fully supports the six logistics rights that can streamline crop production distribution by automating the entire value chain management process, from analyzing the optimum quantities required for the targeted market.

The system supports procuring and distributing crop production across many supply chain points with remote temperature monitoring devices. The solution further strengthens the supply chain by providing warehouse management, inventory management, asset management, and fleet management to ensure the best utilization of crop production.



Decision Support System

Entution SCALE comprehensively delivers decision driven analytical information by comparing the farmer partners farming cycle and the buyer's periodical demand, which synchronizes demand and supply of the harvest without shortage or waste of production.



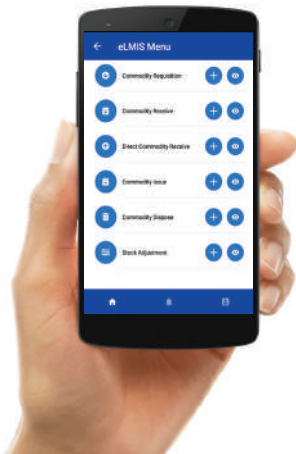
SCALE Core Applications

Entution SCALE is a fully-fledged solution that caters to all the relevant supply chain points covering, Central, Regional and Remote Supply Chain points. The cloud-based online application is deployed at the sites with proper infrastructure and internet connectivity. The solution stack also includes offline desktop Apps to cater areas with poor infrastructure and internet connectivity to ensure uninterrupted operations. The state of art Mobile Application is designed purely for farming operations, ensuring mobility, accessibility and availability.



Online

- ✓ Cloud Based Solution with extensive functionalities.
- ✓ Real time data synchronizations and validations.
- ✓ Best suit for the sites/locations with proper infrastructure and internet connectivity.
- ✓ Mainly supports central and regional level supply chain operations.

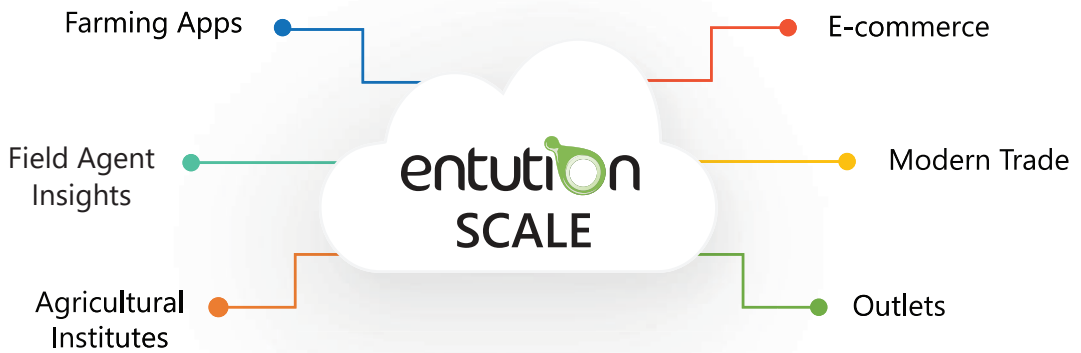


Mobile

Mobile application is a subset of the offline application. This can be used at the Farm/Economic Center level. Application can work with interrupted internet connectivity and automatically synchronize data based on the internet availability.

Interoperability

Seed to Plate



CROP MANAGEMENT

- Farming Capacity
- Crop Cycle Monitoring
- Field Agent Visit Scheduling

INVENTORY & WAREHOUSE

- Batch, Lot, Expiry date, Manufacture Date, Manufacturer records
- VVM stage Management
- Integration with RTM devices for temperature monitoring.

DISTRIBUTION

- Delivery Pickup throughout the supply chain networks
- Manage Reorder level QC procedures and batch recall facilities
- Adaptable workflows & Journeys based on the business operation

PROCUREMENT

- Procurement and inbounding of commodities
- Farmer Partner Management
- Farmer Partner Contract Management

DECISION SUPPORT SYSTEM

- Demand & Supply forecasting with pipeline management
- Interactive business intelligence dashboards
- Different reports covering all the modules
- Actionable Notification



Ready to Deploy

Entution SCALE is ready to engage in both developed & developing countries with minimal configuration, structured training sessions, video and user manuals. The unique architecture of the Entution platform allows accommodating complex user requirements and localization, improving user acceptance of the solution. Based on our proven fully automated, semi-automated and manual implementation model. Bileeta is capable of carrying out the implementation and ensure the long-term sustainability of the solution via local capacity building.

One of the critical reasons for the successful track record is the experience of Bileeta's team in conceptualizing and deploying state of the art solutions that are easy to adopt, use and sustain. The subject matter experts are highly experienced and proficient in the supply chain management industry and deploying software solutions in various geographies. The technology team is a power-packed unit of masters in specific areas of technological expertise. They are bound to the ever-changing trends in information systems solutions and create cutting-edge solutions that harness the power of tomorrow's technology for today.



Next Steps

Bileeta engaged in delivering cutting edged Enterprise Solutions for the communities around the world to enrich people's lives through technology.

We can meet with you to discuss your business needs, assess the requirements, provide insights on our proposed solution, pricing details and to clarify all your queries related to the solution deployment.

*Call Bileeta today to set up a Demo
to experience the solution offering!!!*

The Bileeta logo consists of the word "bileeta" in a lowercase, white, sans-serif font. The text is centered within a white rounded rectangular border that has a slight shadow effect.

Bileeta (Pvt) Ltd.
160/24, 1st Floor,
Kirimandala Mawatha,
Colombo 5, Sri Lanka.

 +94 114 378 378

 vcminfo@bileeta.com

 www.bileeta.com

