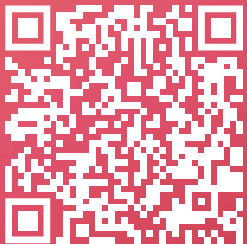


**bileeta**

# entution ERP

## Product Capability Guide for SMEs

*Driving the SMEs towards  
New Data Driven Culture*



[www.bileeta.com](http://www.bileeta.com)



Are you Struggling with Erratic and Inaccurate Information,  
which causes Roadblocks to your **GROWTH??**



**Entution SME ERP** instrumentally helps small and medium businesses to effectively adapt to the technology to empower their digital transformation journey. It effectively unfolds many new meanings and expands dimensions of the business by optimizing the business processes, providing easy visibility of all operations with intelligent information. Entution SME ERP is a flexible and easily adaptable solution that seamlessly provides solutions for SMEs to overcome the above challenges.

Through the expertise we gained by serving a series of SMEs in various industry domains via our SME ERP, we understand the heartbeat of the SMEs and their critical challenges. We provide technical expertise and guidance to SMEs and work as a catalyst to uplift the growth potentials to explore new horizons.

Entution SME ERP comes with four Core / Base modules which are essential for SMEs to start their digital transformation journey; Sales & Invoicing, Purchasing, Inventory Management and Accounting and Finance combining intelligent business reporting layer with an array of informative decision driven dashboards with over 100+ KPIs.

Apart from the above core modules Entution offers industry specific modules extensions that can be applied on top of the core modules; Customer Relationship Management (CRM), Fixed Assets Management, Simple Manufacturing and Projects & Service Management.



# How Entution ERP Help SMEs to Embrace Greater Growth Potential



Entution SME ERP seamlessly helps you to better plan your resources, reduce operational costs, eliminate wastages, improved inventory costs and increase process excellence.



Small and Businesses can eliminate roadblocks to their growth by embracing globally accepted business processing practices introduced by Entution ERP.



Entution ERP offers better customer service by providing better access to customer information that prevents revenue leakages.



Better Financial operations lead to well-disciplined financial management practices with adequate controls.



Improved cash flows of the business operations.



It supports improving communication across departments and optimizing business processes, enabling easy visibility of all operations.



Outdated legacy systems generate inaccurate information and unnecessary data islands where small and medium businesses find making well-informed decisions challenging. Entution ERP is a powerful data hub that allows businesses to collect, store, and analyze data seamlessly across all operations.



Entution ERP supports small and medium businesses to adapt to new 'Data Driven' operations with enhanced business reporting and real-time information.



Entution ERP makes you intelligent in making informed decisions by providing access to state-of-the-art smart KPIs and Business Intelligent reporting facilities.

# Bileeta Entution at a Glance



## Purchasing

The Entution Purchasing module covers end-to-end aspects of any Purchasing operation, whether Imports or local Purchasing channels. You will be able to manage your suppliers, keep track of supplier credit control, record Purchase Orders, Invoices & payments to suppliers, and keep track of the returns process.



## Inventory Management

The Entution Inventory management module will assist by planning your inventory to ensure over-purchase is avoided and required Purchasing are tracked on time. This module will also provide real-time visibility to all the inventory at every location & warehouse & transparency in inventory movement, inventory costing & expiry management.





## Sales & Invoicing

Entution Sales Module empowers your sales team to initiate a Sale Order & progress until delivery & invoice completion, simultaneously managing credit control functionalities, pricing variants, discounting scenarios & order fulfilment. These processes bring absolute visibility & control to your entire sales operation, empowering you to implement market strategies dynamically.



## Accounting & Finance

Entution integrates all processes in your company into the centralized Accounting & Finance Module, which is the core of those business processes. Simultaneously Entution will also manage financial elements such as your general ledger, accounts payable, accounts receivable, cash & tax management, ultimately generating the automated Financial Statements. You will have real-time access to important core business & financial data for strategic decision-making and regulatory compliance adherence.



## Business Analytics

Entution enables your management team to easily monitor the overall organizational performance through its comprehensive, real-time Business Analytics platform. That analyses strategic & operational business data & provides a customized representation of critical information that reflects your organization's current status and forecasted insight through intelligence information, which will enhance the decision-making process.



# Add On Modules

## Fixed Asset Management



Entution Fixed Assets module handles asset registration, classification, tagging, retirement and disposal for individual as well as composite assets.



## Customer Relationship Management



You can follow up on your customers from a central position, engaging in effective communication with customers while you keep track of every interaction with your customers.



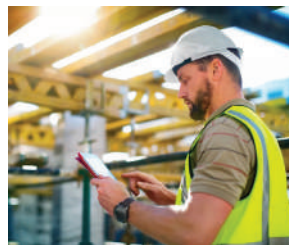
## Ecommerce Platforms

Bileeta Entution SME ERP can be seamlessly integrated with Ecommerce Platforms Such as Shopify , CORD360 and many more.

## Simple Manufacturing



Production planning, such as raw materials (MRP), machinery & labour, & track the status of work-in-progress, while obtaining a real-time picture of the shop floor.



## Project Management & Service Management

Our solution provides dedicated tools to help you define projects & service jobs, synchronize dates, track status, avoid missed deadlines, and ensure profitability over your job activities.



# Bileeta Entution Core Modules & Core Capabilities



## Sales & Invoicing

Order Placement & Invoicing | Sales Quotations | Simple Sales Invoicing Process  
Partial & Under Deliveries | Credit Policies & Credit Control | Returns Management



## Accounting & Finance

Cash & Bank Management | Multi-Currency Operations | Financial Statements  
Account Payable | Account Receivable | General Ledger



## Purchasing

Local Purchasing | Import Management | Import Costing | Vendor Management  
Supplier Payment Management



## Inventory Management

Multiple Locations Management | Inventory Costing | Inventory Movement Tracking  
Expiry, Batch & Serial Tracking | Inventory Transfers | Stock Counts & Adjustments

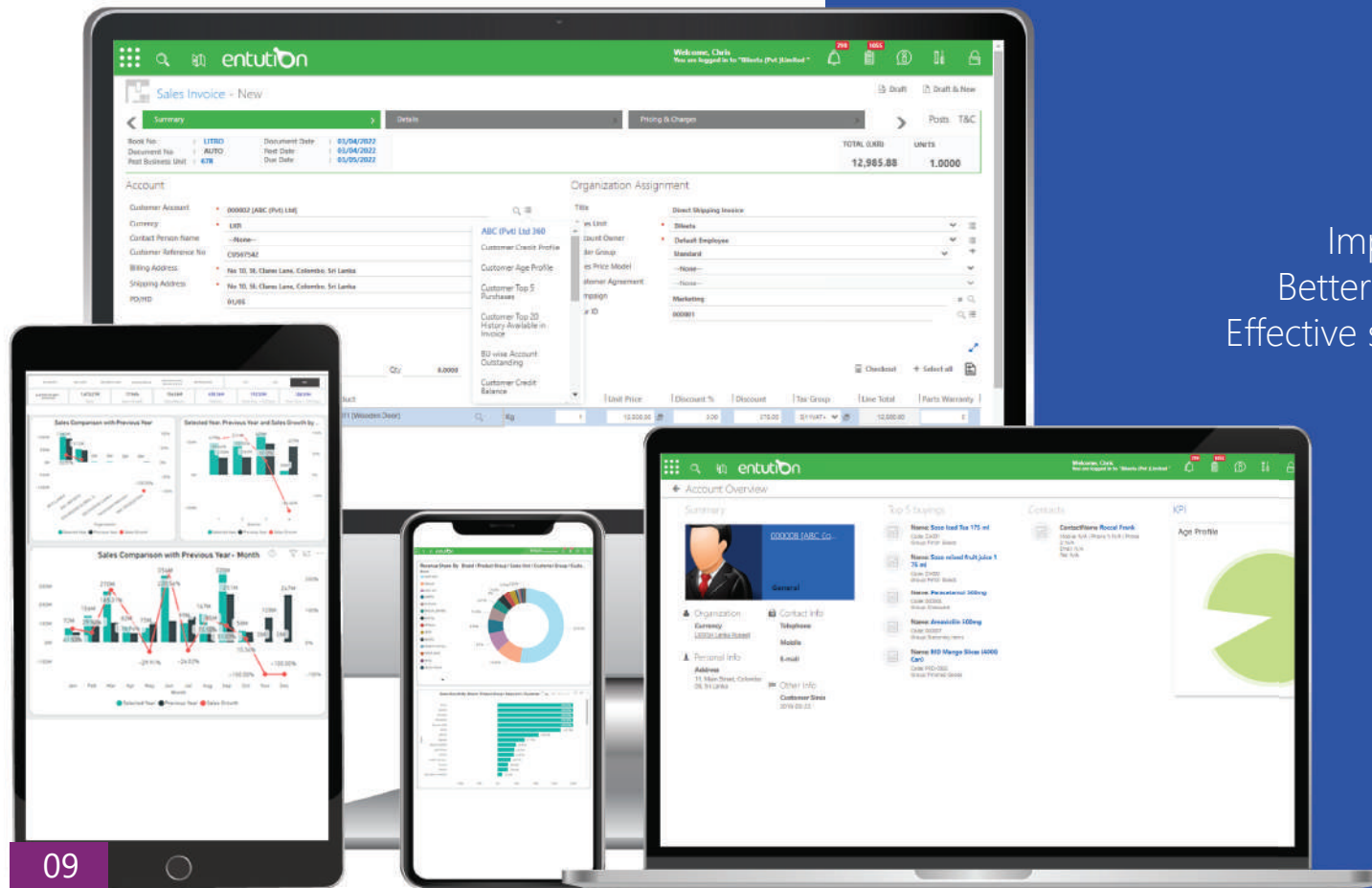


## Business Analytics

Quick And Accurate Data | Compare Historical Data | Recognizing Market Patterns  
Overall Business Visibility | Critical Data Availability For Strategic Decisions

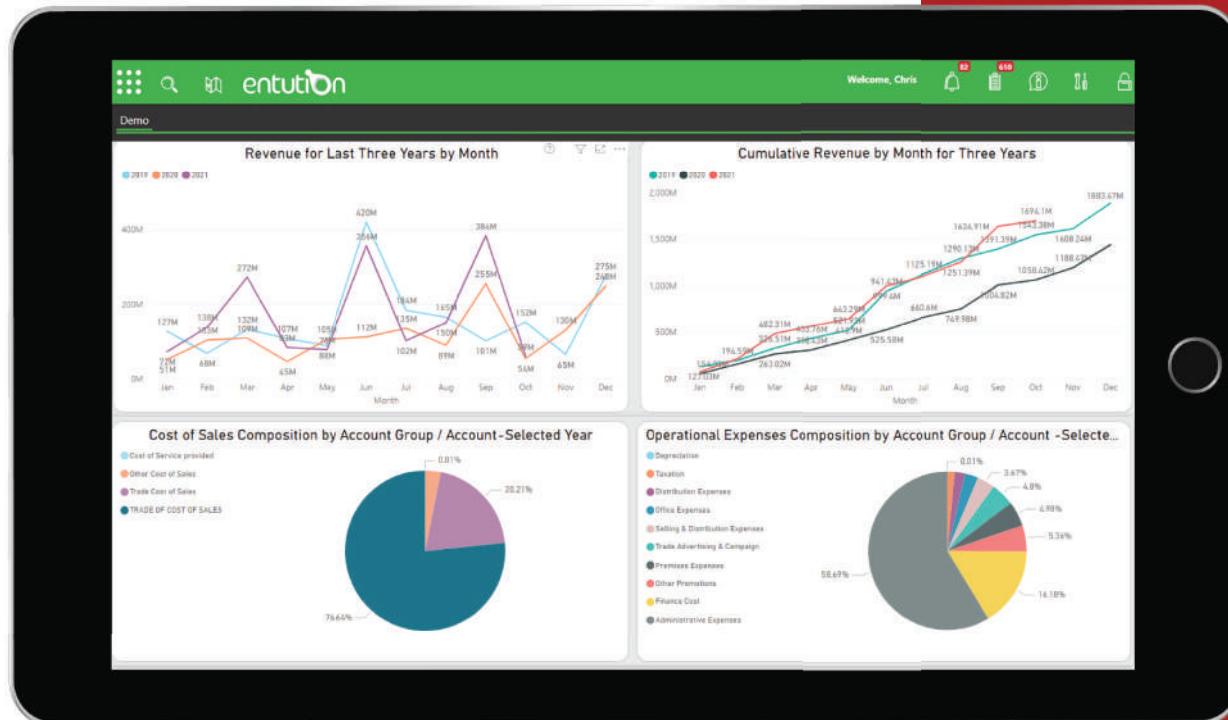
# Better Customer Experience with Entution Sales & Invoicing

Increased revenue,  
Improved customer service,  
Better internal communication,  
Effective sales force management,  
Improved productivity.

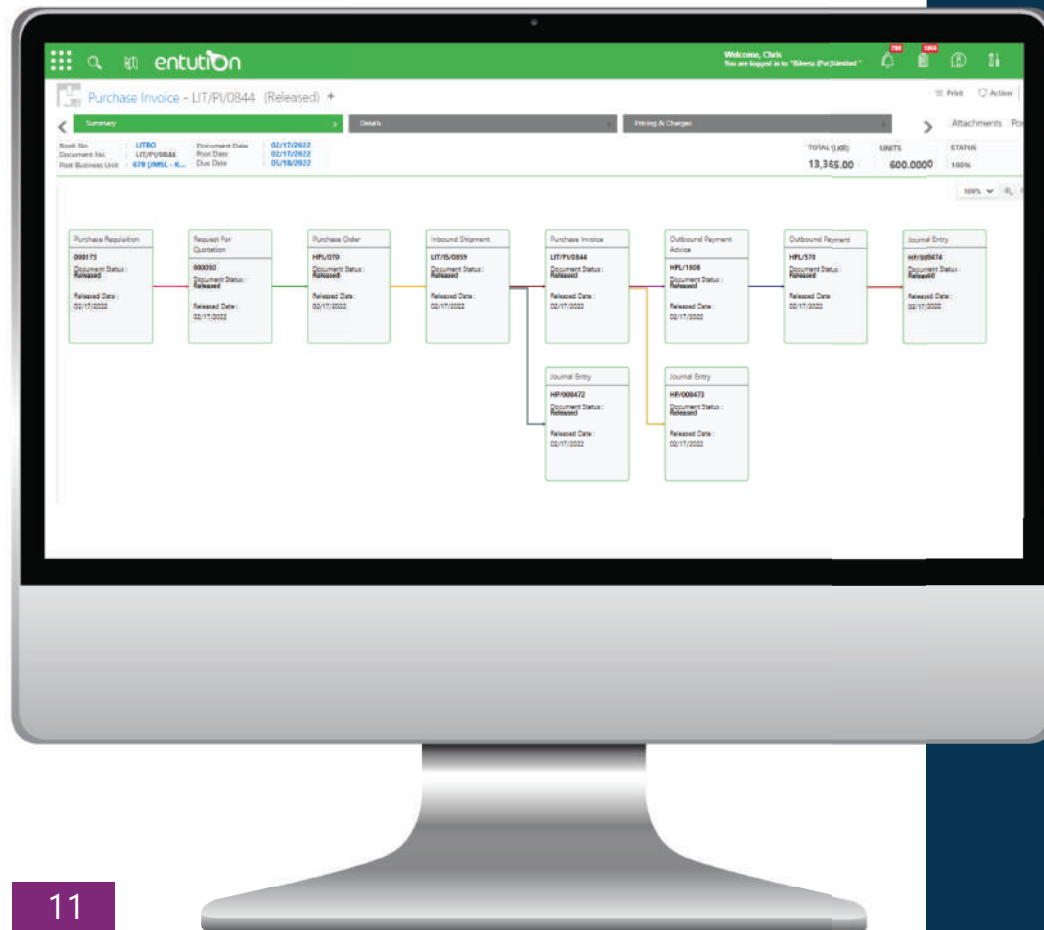


# Better Financial Management to leverage of Profitability and Growth

Automatic document production,  
Fast and accurate invoices,  
Credit notes, Purchase orders,  
Printing statements,  
Improved Accuracy,  
Cost Minimization.



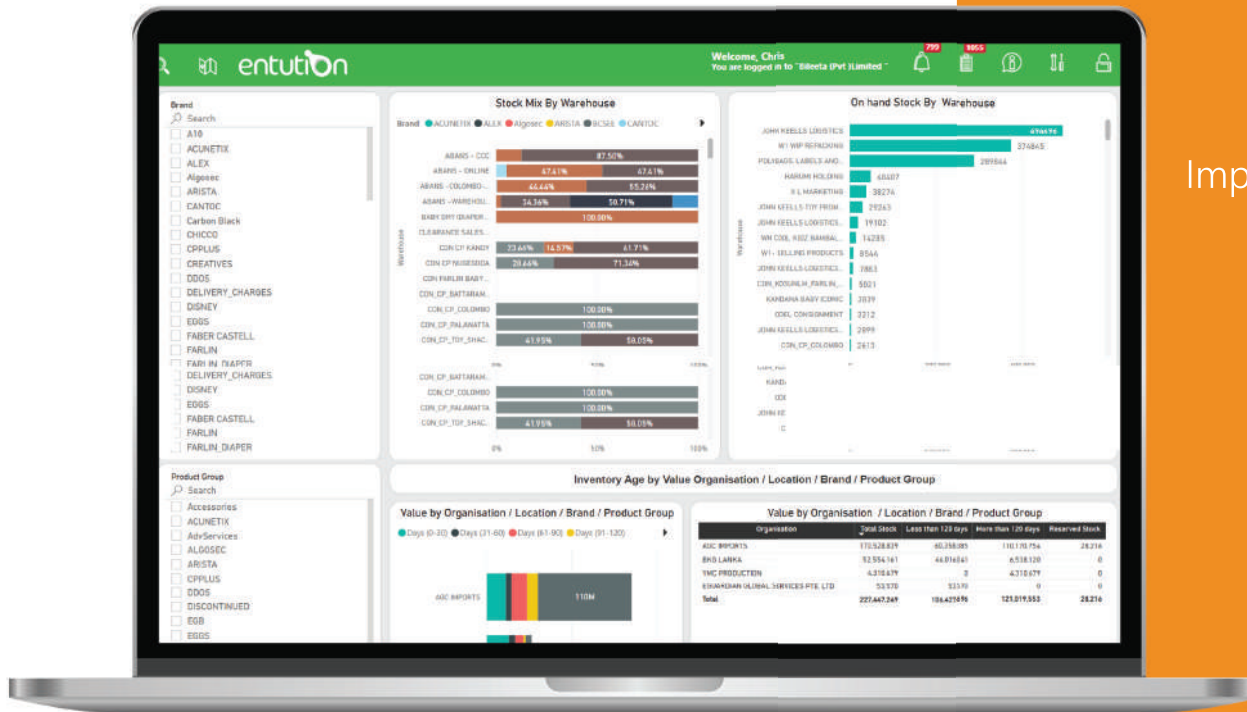
# Better Purchasing for Operational Excellence



Manage your Purchasing process from raising Purchase Orders to supplier invoices & return processing, manage your suppliers and settle them on time to gain better control and efficiency.

# Better Inventory Management with Visibility, Control & Traceability

Improved accuracy of inventory orders,  
Organized warehouse,  
Saves time and money,  
Increased visibility into the  
inventory and eliminate wastages.



# Real-Time Business Intelligence Platform to Analyze the Overall Business

Capture end-to-end analytics for all business processes, and make strategic decisions based on accurate & timely insights to your operations.



# Work Smart and Make Smarter Decisions with Entution SME ERP



# Way Forward

📍 Bileeta (Pvt) Ltd.  
160/24, 1<sup>st</sup> Floor,  
Kirimandala Mawatha,  
Colombo 5, Sri Lanka.

☎ +94 114 378 378

✉ sales@bileeta.com

🌐 www.bileeta.com

