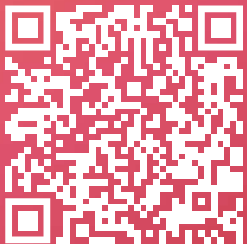


bileeta

entution ERP

Product Capability Guide for SMEs

*Driving the SMEs towards
New Data Driven Culture*



www.bileeta.com



Are you Struggling with Erratic and Inaccurate Information, which causes Roadblocks to your **GROWTH??**



Entution SME ERP instrumentally helps small and medium businesses to effectively adapt to the technology to empower their digital transformation journey. It effectively unfolds many new meanings and expands dimensions of the business by optimizing the business processes, providing easy visibility of all operations with intelligent information. Entution SME ERP is a flexible and easily adaptable solution that seamlessly provides solutions for SMEs to overcome the above challenges.

Through the expertise we gained by serving a series of SMEs in various industry domains via our SME ERP, we understand the heartbeat of the SMEs and their critical challenges. We provide technical expertise and guidance to SMEs and work as a catalyst to uplift the growth potentials to explore new horizons.

Entution SME ERP comes with four Core / Base modules which are essential for SMEs to start their digital transformation journey; Sales & Invoicing, Purchasing, Inventory Management and Accounting and Finance combining intelligent business reporting layer with an array of informative decision driven dashboards with over 100+ KPIs.

Apart from the above core modules Entution offers industry specific modules extensions that can be applied on top of the core modules; Customer Relationship Management (CRM), Fixed Assets Management, Simple Manufacturing and Projects & Service Management.



How Entution ERP Help SMEs to Embrace Greater Growth Potential



Entution SME ERP seamlessly helps you to plan your resources better, reduce operational costs, eliminate wastages, improve inventory costs and increase process excellence.



Small and Medium Businesses can eliminate roadblocks to their growth by embracing globally accepted business processing practices introduced by Entution ERP.



Entution ERP offers better customer service by making sure that you get the necessary support to run the ERP smoothly in an optimum manner.



Better Financial operations lead to well-disciplined financial management practices with adequate controls.



Improved cash flows of the business operations.



It supports improving communication across departments, optimizing business processes and enables easy visibility of all operations.



Outdated legacy systems generate inaccurate information and unnecessary data islands where small and medium businesses find making well-informed decisions challenging. Entution ERP is a powerful data hub that allows businesses to collect, store, and analyze data seamlessly across all operations.



Entution ERP supports small and medium businesses to adapt to new 'Data Driven' operations with enhanced business reporting and real-time information.



Entution ERP makes you intelligent in making informed decisions by providing access to state-of-the-art smart KPIs and Business Intelligent reporting facilities.

Bileeta Entution at a Glance



Purchasing

The Entution Purchasing module allows you to place your Purchase Orders and track the process from goods reception to getting the supplier's final invoice. Through our stock reports and the dashboard, you will be able to examine the on-hand supplies of all items at any of your warehouse sites, as well as track product movement to detect slow-moving and fast-moving products. Furthermore, you will be able to efficiently oversee your overall suppliers and ensure that you pay your suppliers on time, follow-up on deliveries, and have visibility into your entire stock levels to minimize waste and stock holding expenses.



Sales & Invoicing

Entution Sales Module enables your sales staff to initiate a Sale Order and follow it through to delivery and invoice fulfillment. Based on the real-time information provided by our "Age analysis" reports and dashboards, the system enables you to oversee the overall debtor status and follow-up on all your collections on time. Further, you can apply automated credit control options to ensure that you can manage difficult customers with better control. These procedures gives you complete visibility and control over your overall sales operation and allows you to elevate your operation to the next level.





Accounting & Finance

Entution integrates all purchasing and sales processes in your company to the centralized Accounting & Finance Module, which is the core of your business processes. Entution will simultaneously handle financial aspects such as your general ledger, accounts payable, accounts receivable, cash management, and tax management to finally provide you with the company's Income statement, Balance Sheet and the Trial Balance. You will have real-time access to critical financial data, such as your profitability, operational costs and liabilities through our reports and the dashboard for strategic decision making.



Business Analytics

Entution enables your management team to easily monitor the overall organizational performance through its comprehensive, real-time Business Analytics and Information module, which analyzes strategic & operational business data related to each module as Procurement, Sales and Finance. Where it covers company's net and gross profitability, cost and expense analysis, sales, cash flow, debtor, creditor and inventory aging, on hand stock levels and furthermore which reflects the current status of your organization that will enhance the decision-making process.



Add On Modules

Fixed Asset Management



Entution Fixed Assets module handles asset registration, classification, tagging, retirement and disposal for individual as well as composite assets.



Customer Relationship Management



You can follow up on your customers from a central position, engaging in effective communication with customers while you keep track of every interaction with your customers.



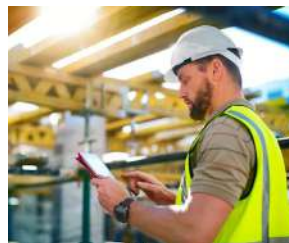
Ecommerce Platforms

Bileeta Entution SME ERP can be seamlessly integrated with Ecommerce Platforms Such as Shopify , CORD360 and many more.

Simple Manufacturing



Production planning, such as raw materials (MRP), machinery & labour, & track the status of work-in-progress, while obtaining a real-time picture of the shop floor.



Project Management & Service Management

Our solution provides dedicated tools to help you define projects & service jobs, synchronize dates, track status, avoid missed deadlines, and ensure profitability over your job activities.

Bileeta Entution Core Modules & Core Capabilities



Purchasing

Purchase Order, Goods Receipt & Purchase Invoicing Returns Management

Create Multiple Warehouses & Real time On-hand Stock Visibility Conduct Stock Counts

Stock Movement, Expiry, Batch & Serial Tracking Stock Transfer between Warehouses



Sales & Invoicing

Order Placement, Dispatch & Invoicing Raise Sales Quotations

Simple Sales Invoicing Process for walk-in Customers Set up Credit Policies & Credit Control

Returns Management Debtor Management, Age analysis and Customer Statements



Accounting & Finance

Cash, Bank and Petty Cash Management Multi-Currency Operations Financial Statement generation

Accounts Payable Accounts Receivable General Ledger Tax Calculations



Business Analytics

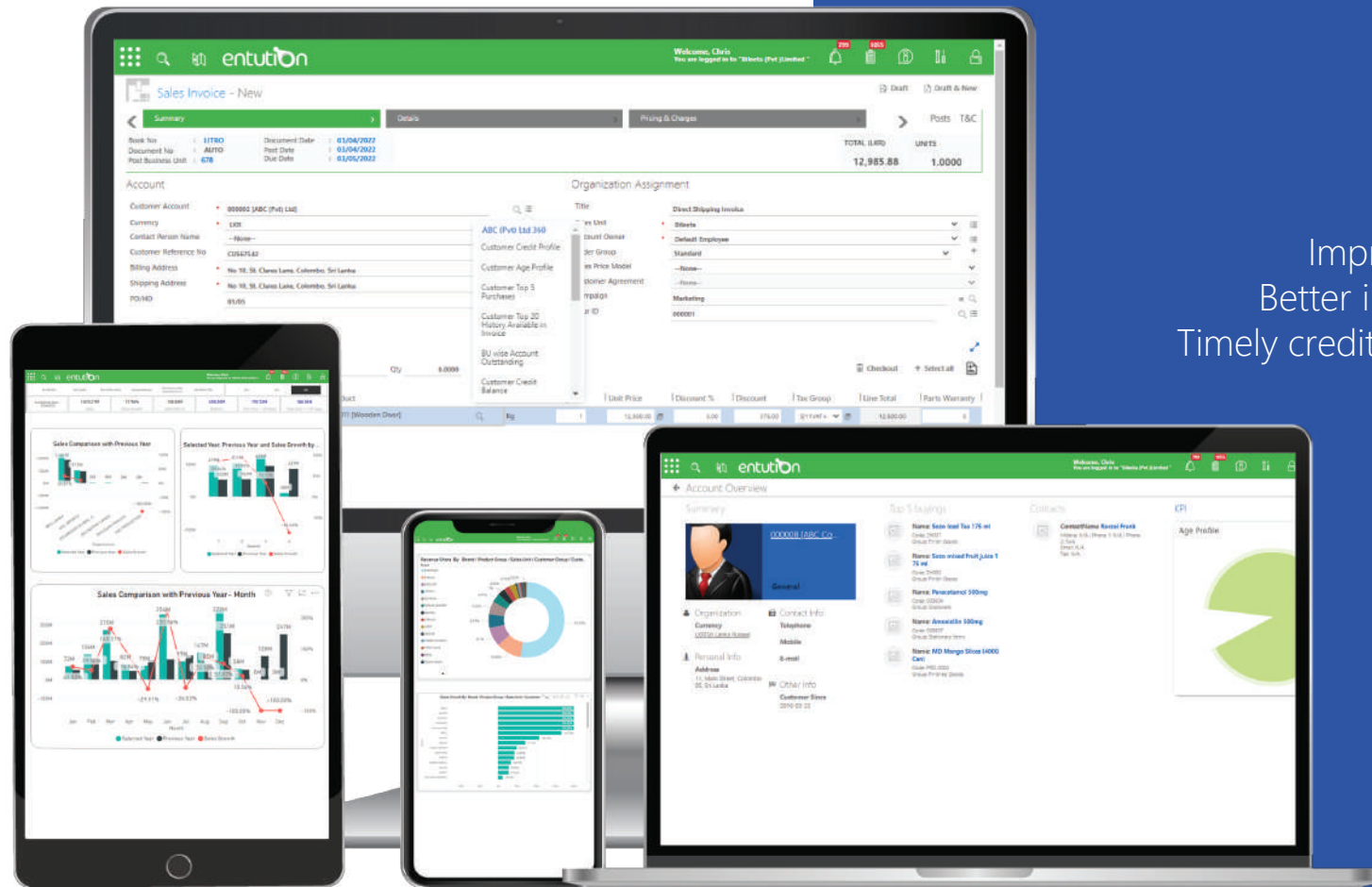
Quick and Accurate Data Compare Historical Data Recognizing Market Patterns

Overall Business Visibility Critical Data Availability for Strategic Decisions



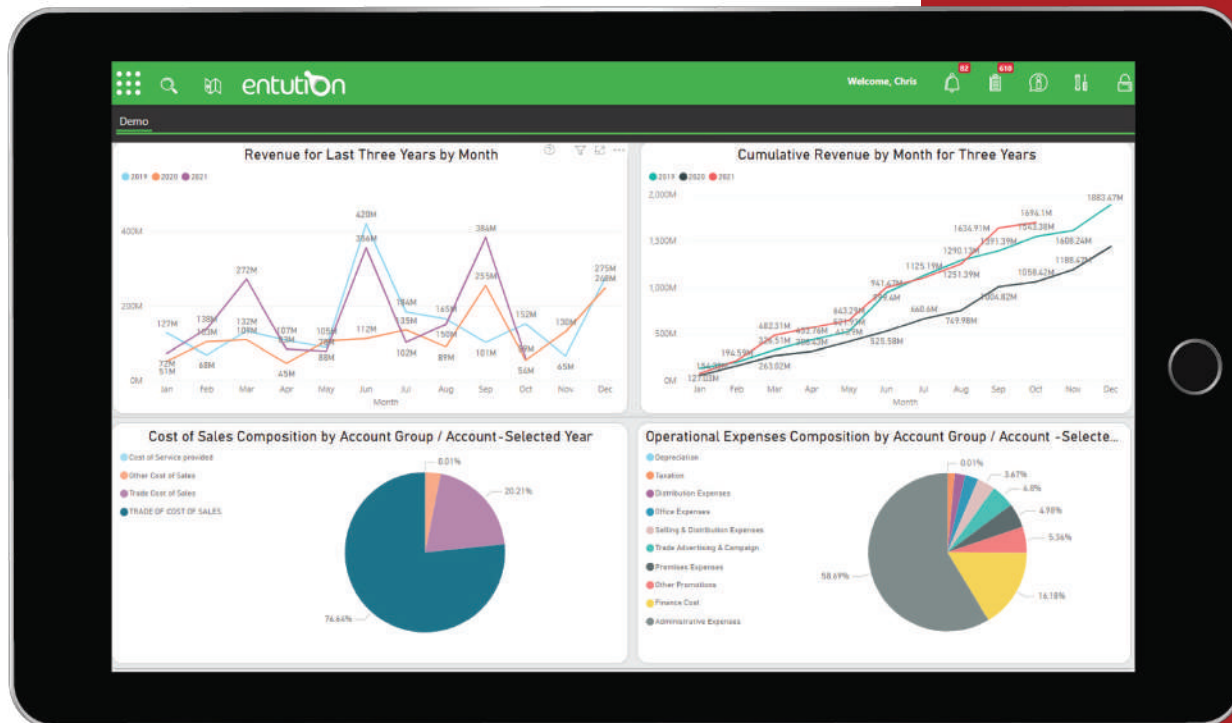
Better Customer Experience with Entution Sales & Invoicing

Increased revenue,
Improved customer service,
Better internal communication,
Timely credit follow-up & collection,
Improved productivity.

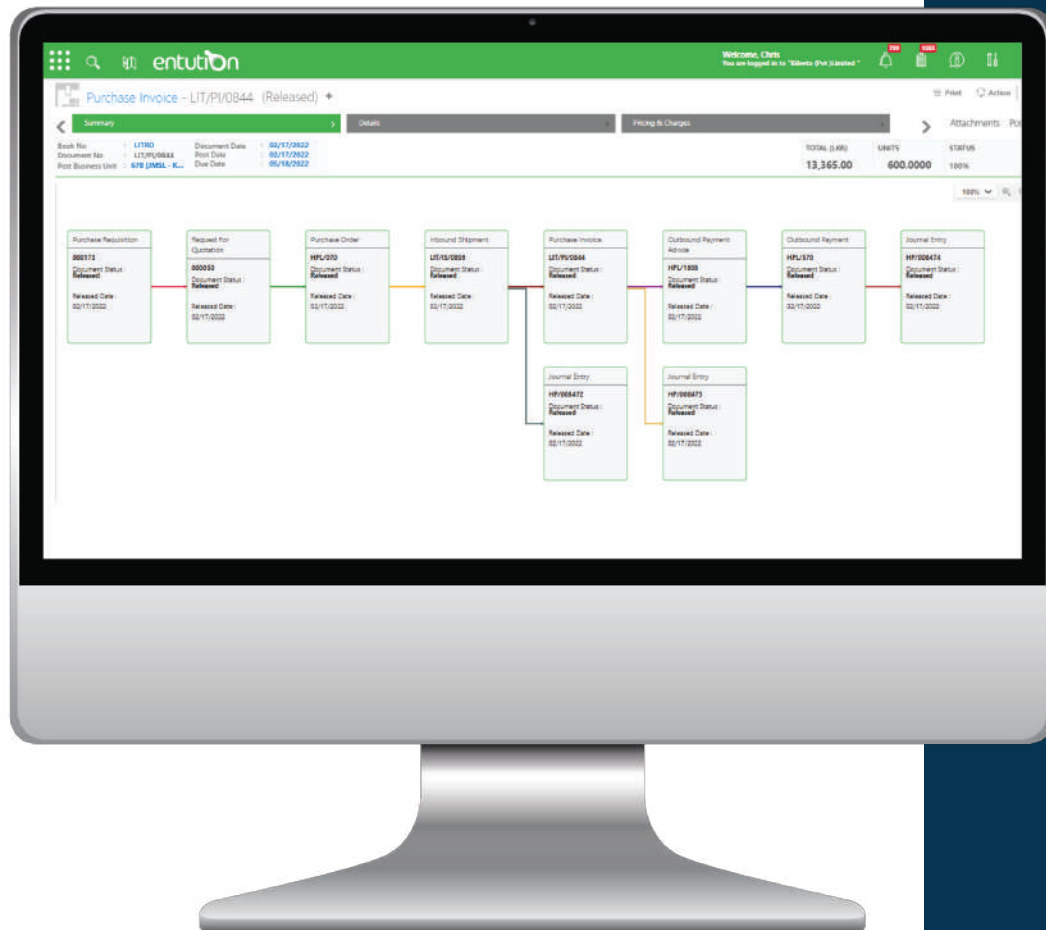


Better Financial Management to leverage of Profitability and Growth

Automatic document production,
Fast and accurate invoices,
Credit notes, Purchase orders,
Printing statements,
Improved accuracy,
Cost minimization.



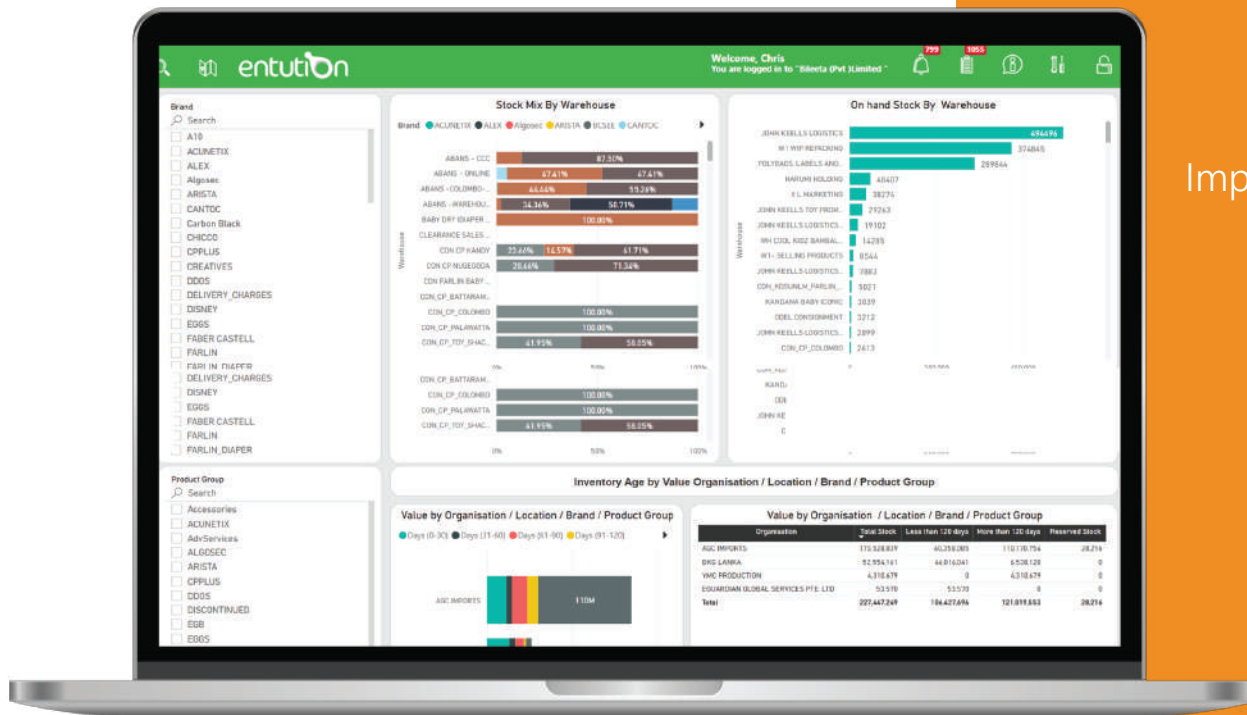
Better Purchasing for Operational Excellence



Manage your Purchasing process from raising Purchase Orders to supplier invoices & return processing, Manage your suppliers and settle them on time to gain better control and efficiency.

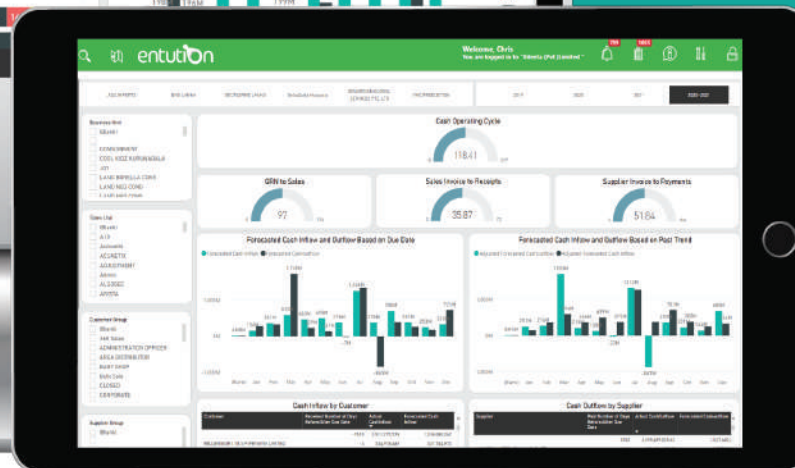
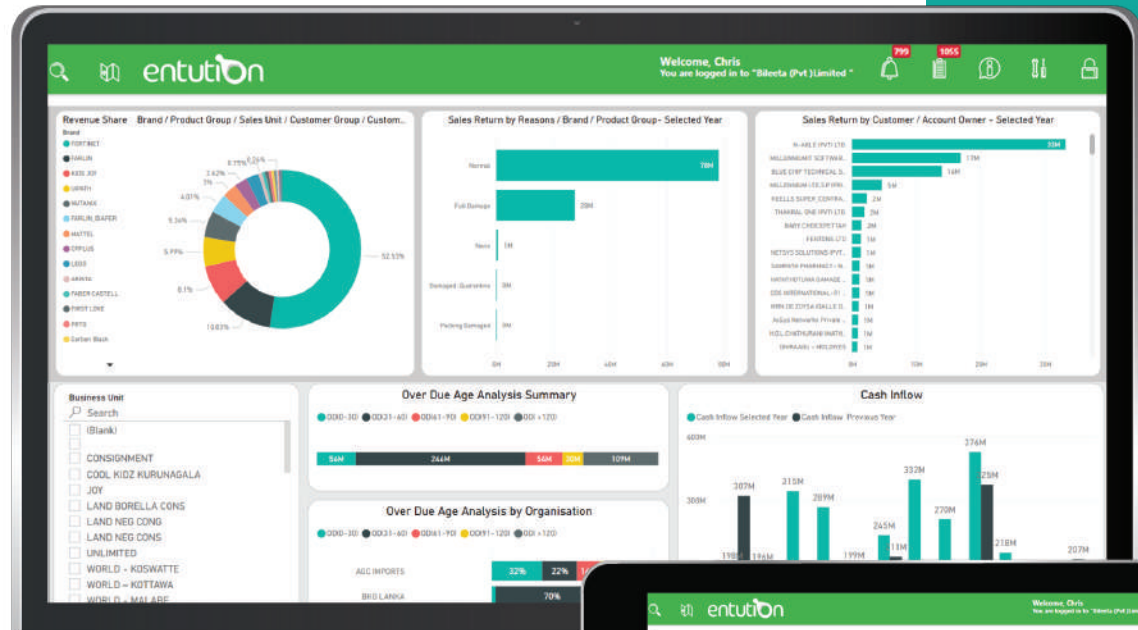
Better Inventory Management with Visibility, Control & Traceability

Improved accuracy of inventory orders,
Organized warehouse,
Saves time and money,
Increased visibility into the
inventory and eliminate wastages.



Real-Time Business Intelligence Platform to Analyze the Overall Business

Capture end-to-end analytics for all business processes, and make strategic decisions based on accurate & timely insights to your operations.



Work Smart and Make Smarter Decisions with Entution SME ERP



Way Forward

📍 Bileeta (Pvt) Ltd.
160/24, 1st Floor,
Kirimandala Mawatha,
Colombo 5, Sri Lanka.

☎ +94 114 378 378

✉ sales@bileeta.com

🌐 www.bileeta.com

